



Technical Information

1920K-RCS

HMF Z001622



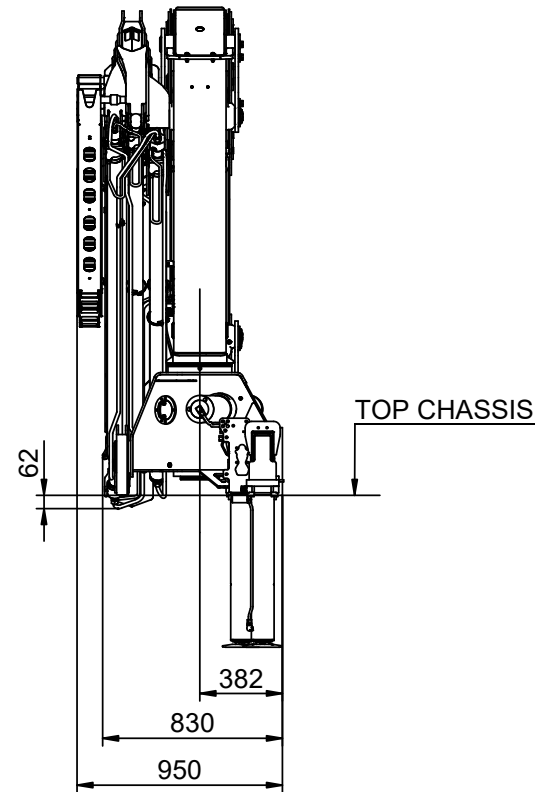
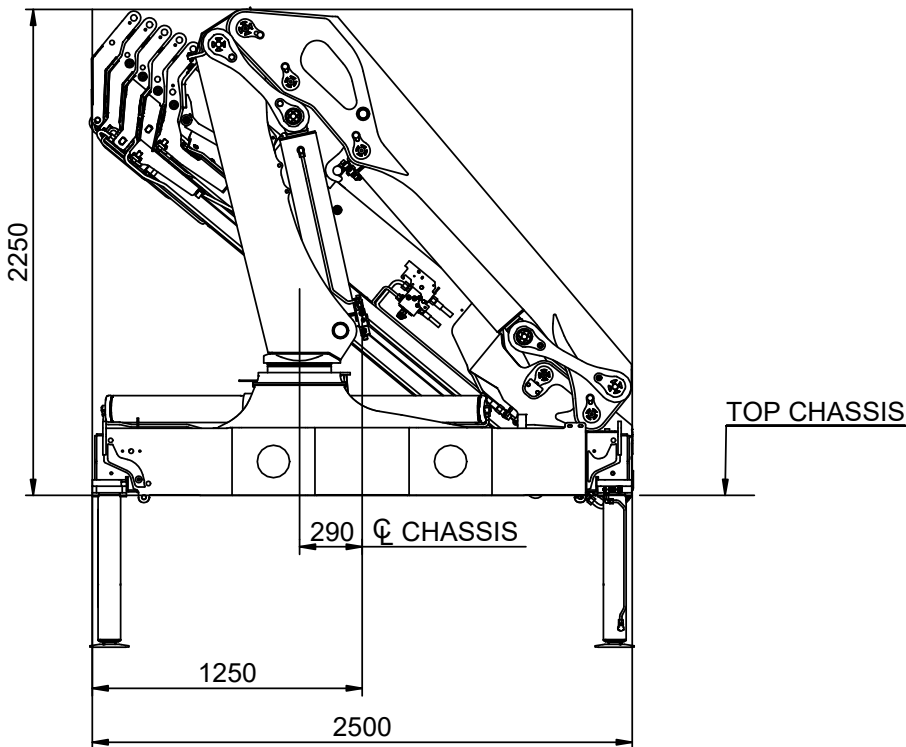
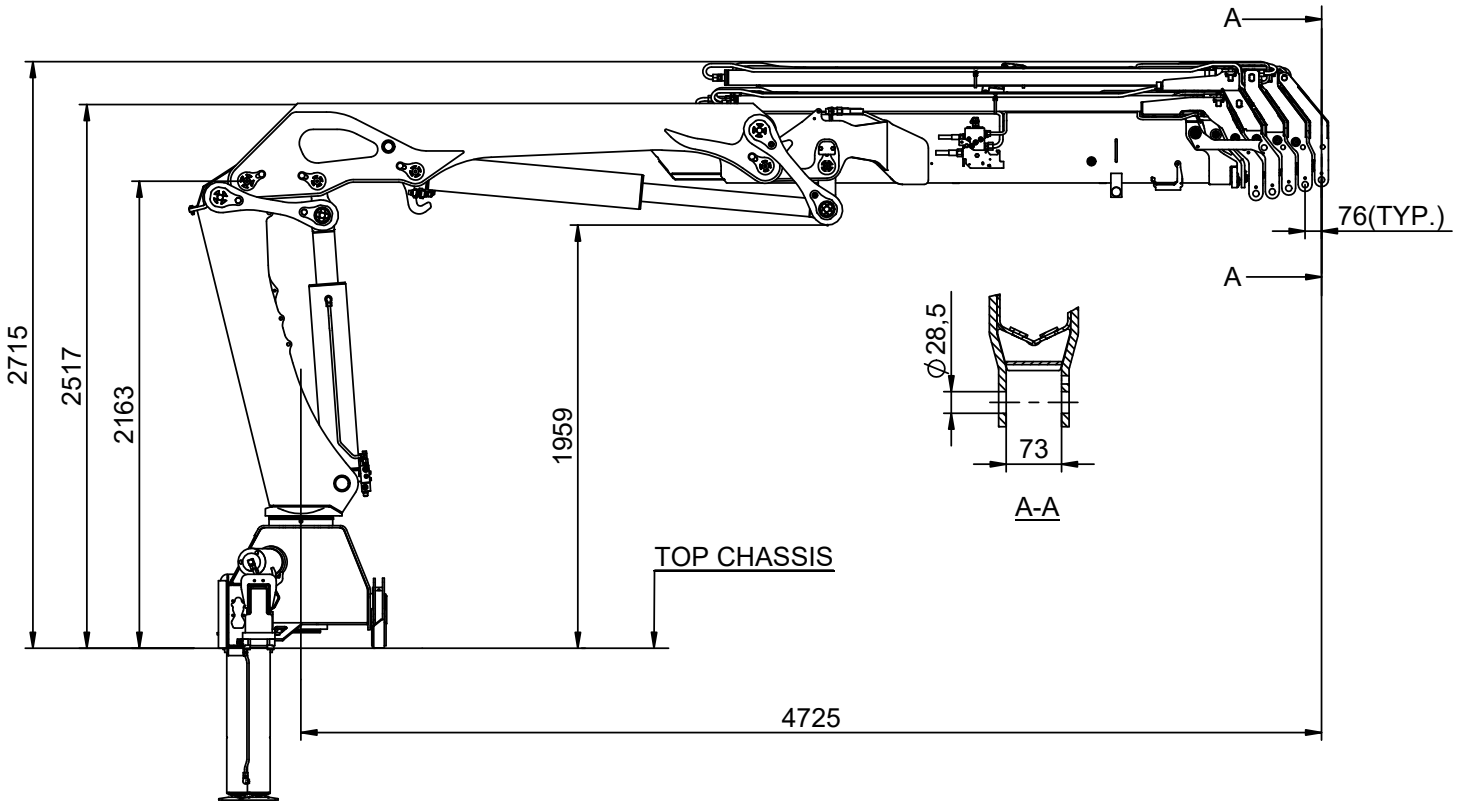
Contents

Catalogue no.	Section
31 127	00
Date	Page
03-01-2019	

	Series	Rev.	Section
Dimension sketch	1920K-RCS	03-01-2019	31 127 40
Slewing radius	1920K-RCS	31-08-2018	31 127 42
Dimension sketch for truck-mounted loader	1920K-RCS	31-08-2018	31 127 43
Lifting height at column	1920K-RCS	31-08-2018	31 127 45
Dimension sketch, fixed stabilizer legs	1920K-RCS	12-11-2018	31 127 50
Dimension sketch, swing-up stabilizer legs 30°- 60° (manual)	1920K-RCS	31-08-2018	31 127 51
Dimension sketch, swing-up stabilizer legs 180° (manual + hydraulic)	1920K-RCS	31-08-2018	31 127 52
Dimension sketch, internal hose routing	1920K-RCS	31-08-2018	31 127 59
Stowed in truck body	1920K-RCS	31-08-2018	31 127 65
Dimension sketch for connecting link	1920K-RCS	31-08-2018	31 127 66
Centres of gravity	1920K-RCS	31-08-2018	31 127 75
Technical Data	1920K-RCS	03-01-2019	31 127 210
Lifting capacity diagram, K1	1920K-RCS	31-08-2018	31 127 221
Lifting capacity diagram, K2	1920K-RCS	31-08-2018	31 127 222
Lifting capacity diagram, K3	1920K-RCS	31-08-2018	31 127 223
Lifting capacity diagram, K4	1920K-RCS	31-08-2018	31 127 224
Lifting capacity diagram, K5	1920K-RCS	31-08-2018	31 127 225
Lifting capacity diagram, K6	1920K-RCS	31-08-2018	31 127 226
Lifting capacity, K1-K6	1920K-RCS	21-08-2018	31 127 235
1920K-RCS with Fly-jib			
Technical Data, 1920-K with Fly-jib	1920K-RCS	31-08-2018	31 127 250
Lifting capacity diagram, 1920-K3 with FJ700 K3	1920K-RCS	31-08-2018	31 127 253
Lifting capacity diagram, 1920-K3 with FJ700 K4	1920K-RCS	31-08-2018	31 127 254
Lifting capacity, 1920-K3 with FJ600	1920K-RCS	31-08-2018	31 127 260
Dimension sketch, 1920-K3 with FJ700	1920K-RCS	31-08-2018	31 127 265

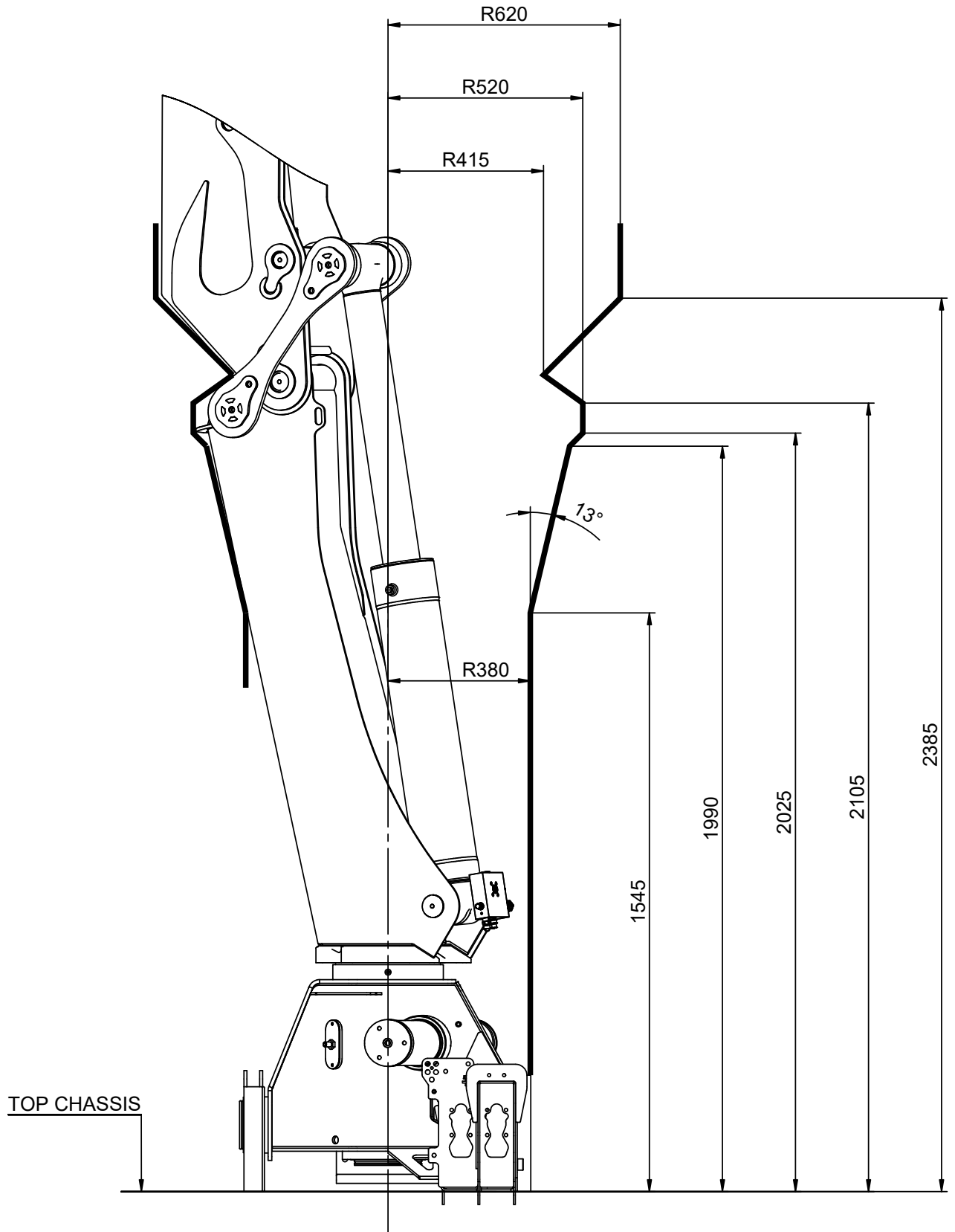
Dimension sketch

Catalogue no.	Section
31 127	40
Date	Page
03-01-2019	1 (1)



Slewing radius

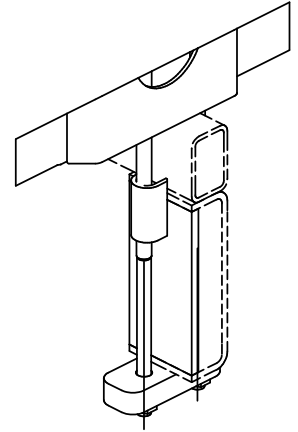
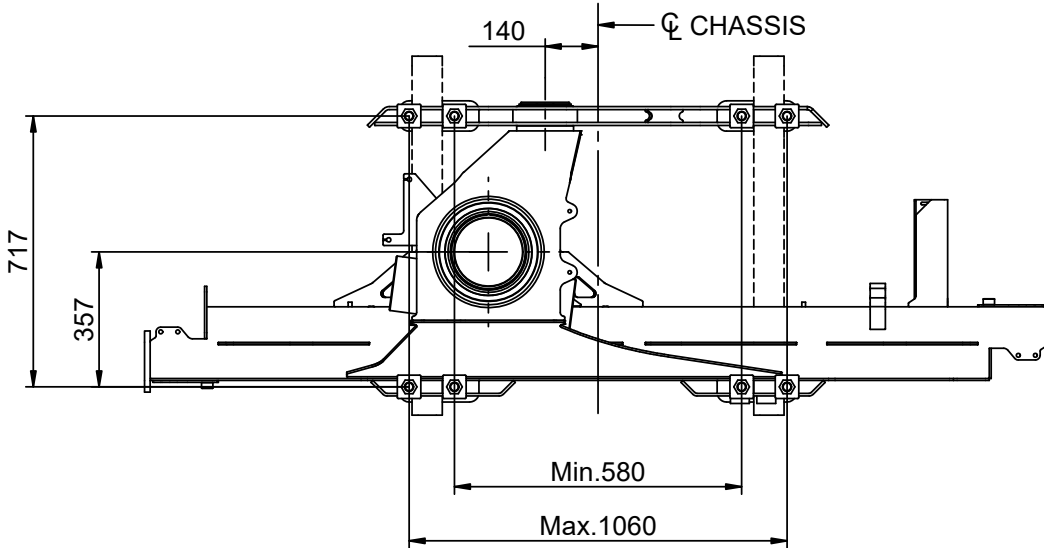
Catalogue no.	Section
31 127	42
Date	Page
31-08-2018	1 (1)



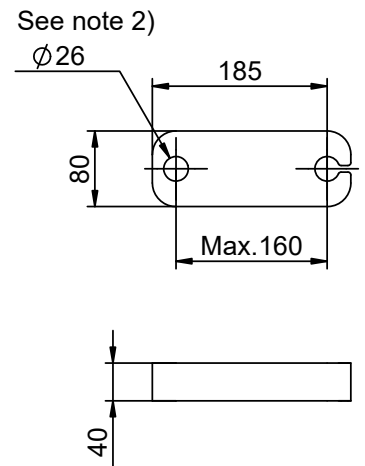
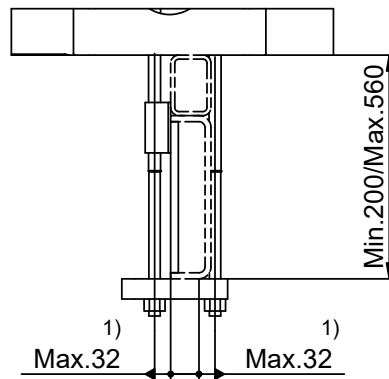
Dimension sketch for truck-mounted loader

Catalogue no.	Section
31 127	43
Date	Page
31-08-2018	1 (1)

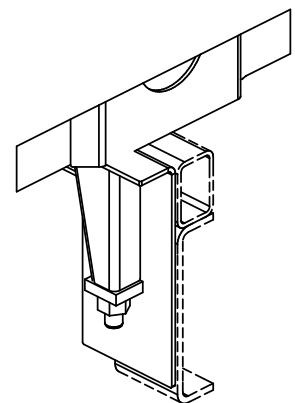
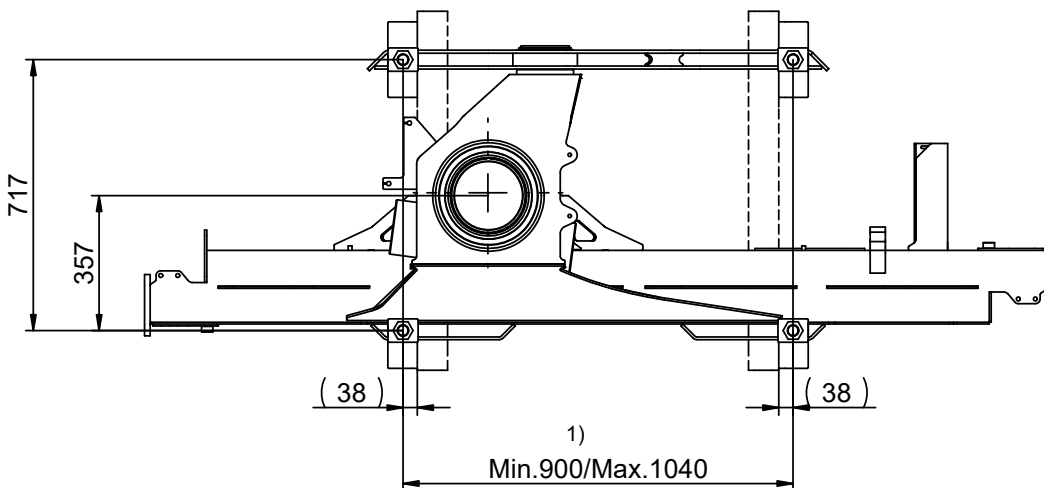
Mounting kit 8 x M24x2 bolts



- Notes:
- 1) Values dictated by strength considerations.
 - 2) Drill hole when assembling
 - 3) As regards installation - please see HMF Installation Manual
 - 4) Mounting kits or spare parts - please see the Spare Parts Catalogue of the individual loader

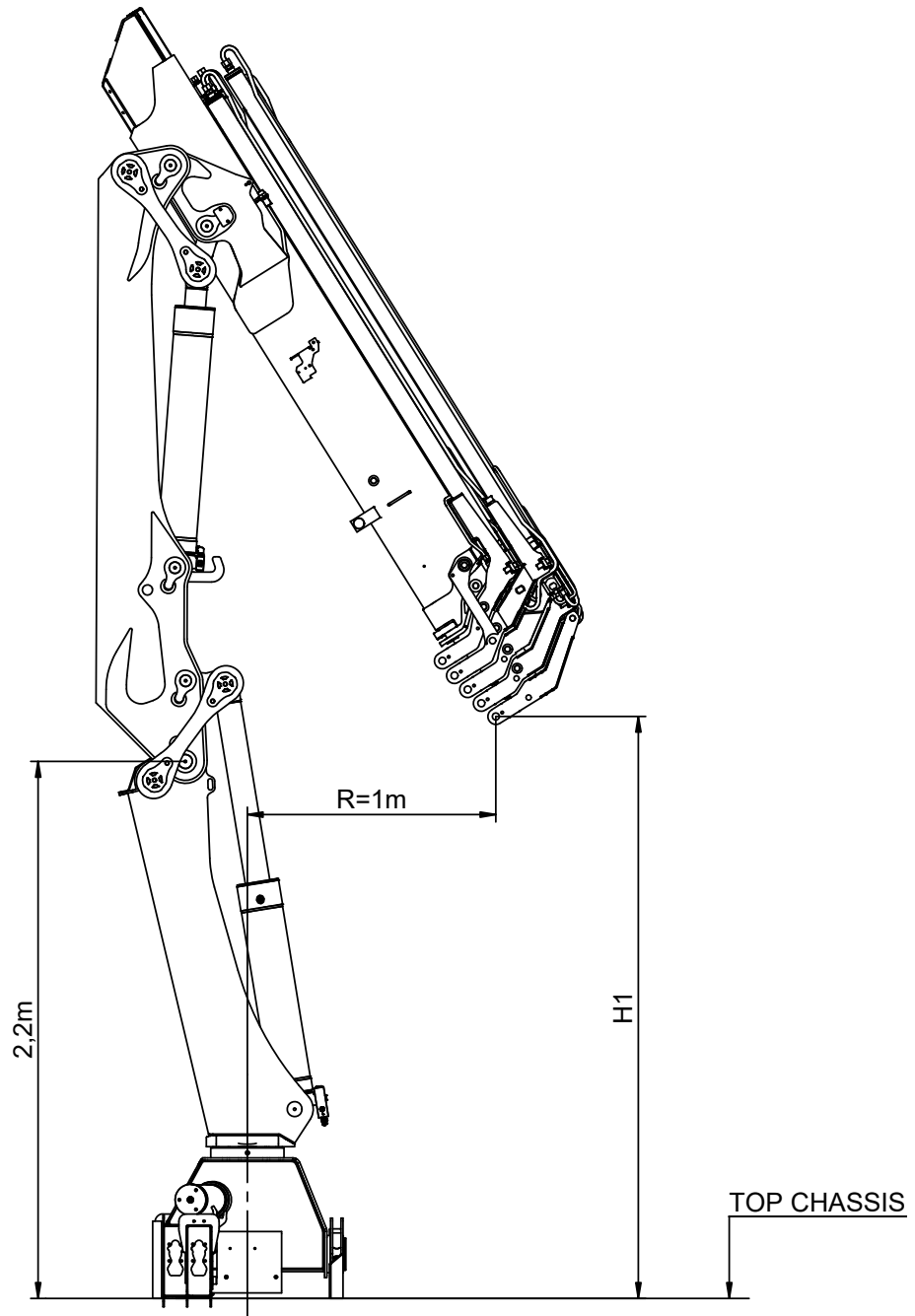


Mounting kit 4 x M30x2 bolts



Lifting height at column

Catalogue no.	Section
31 127	45
Date	Page
31-08-2018	1 (1)



	H1
K1	2,76m
K2	2,71m
K3	2,62m
K4	2,53m
K5	2,44m
K6	2,35m

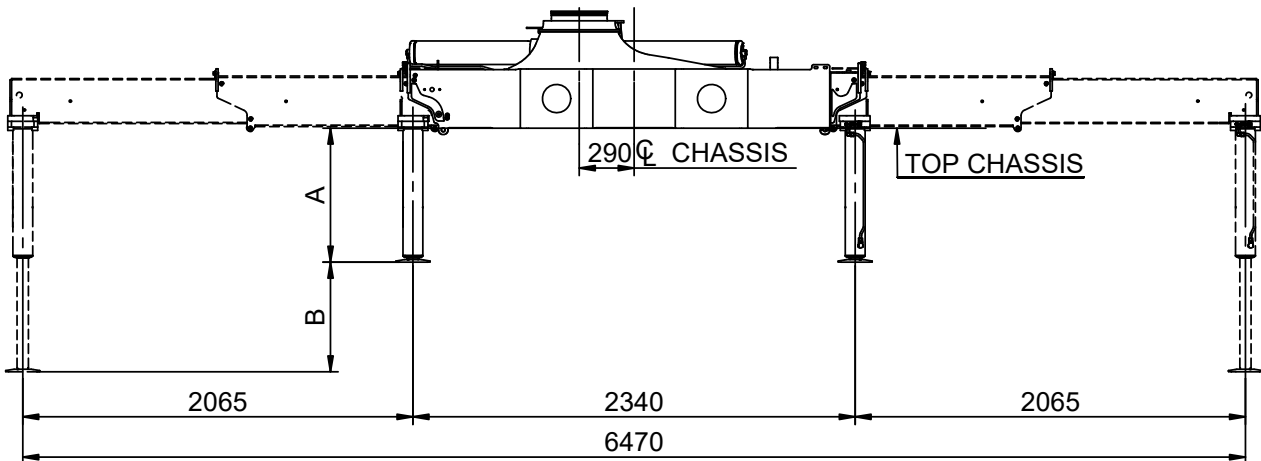
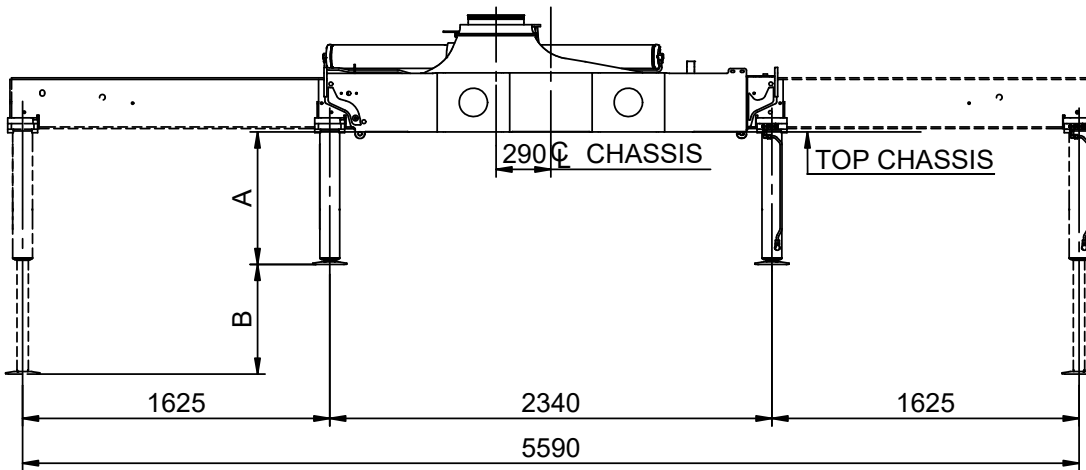
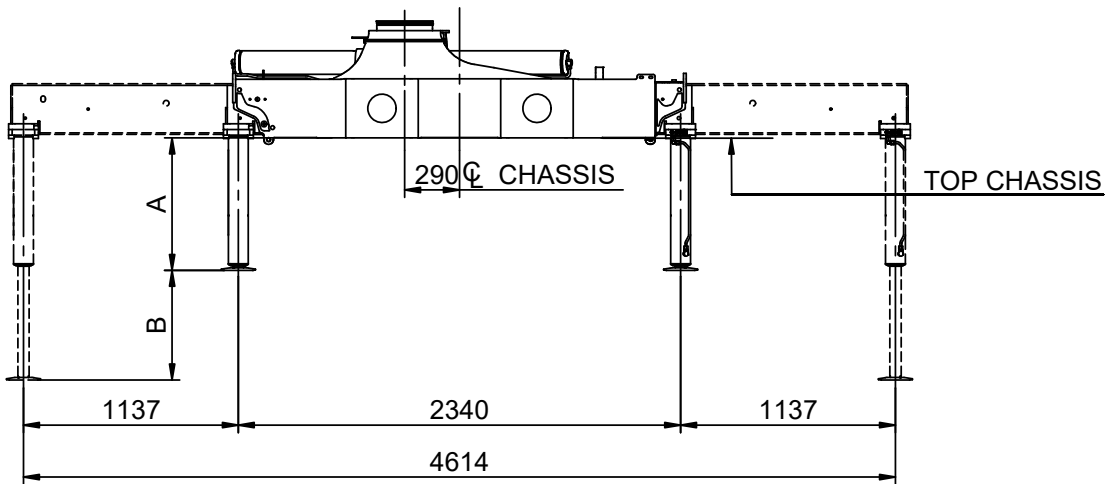


Dimension sketch, fixed stabilizer legs

Catalogue no.	Section
31 127	50
Date	Page
12-11-2018	1 (2)

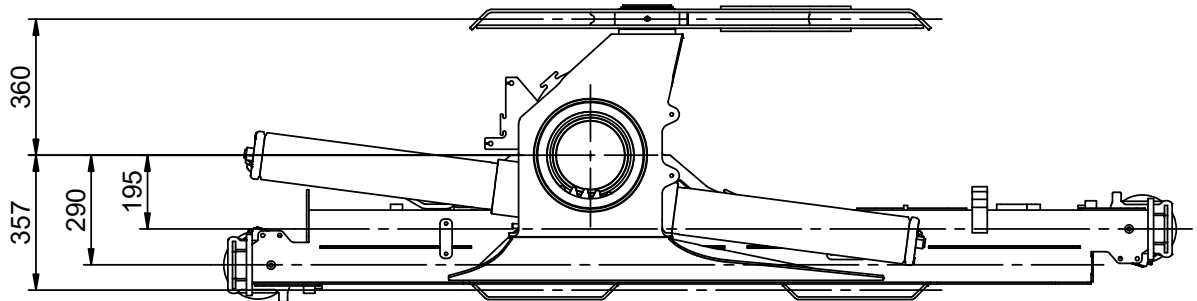
B			
580	A	705	772
680	A	805	872

B			
580	A	773	835
680	A	873	935



Dimension sketch, fixed stabilizer legs

Catalogue no.	Section
31 127	50
Date	Page
12-11-2018	2 (2)

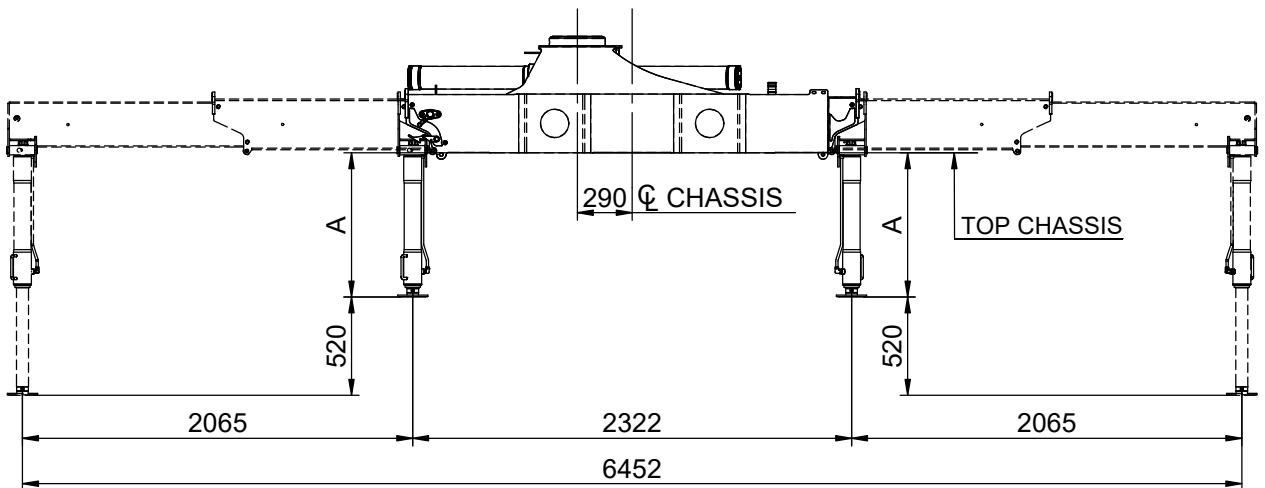
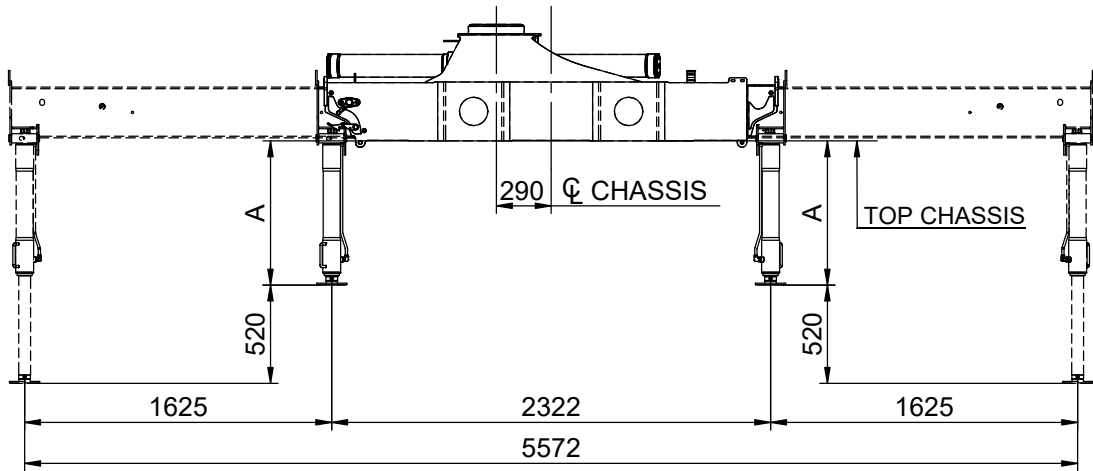
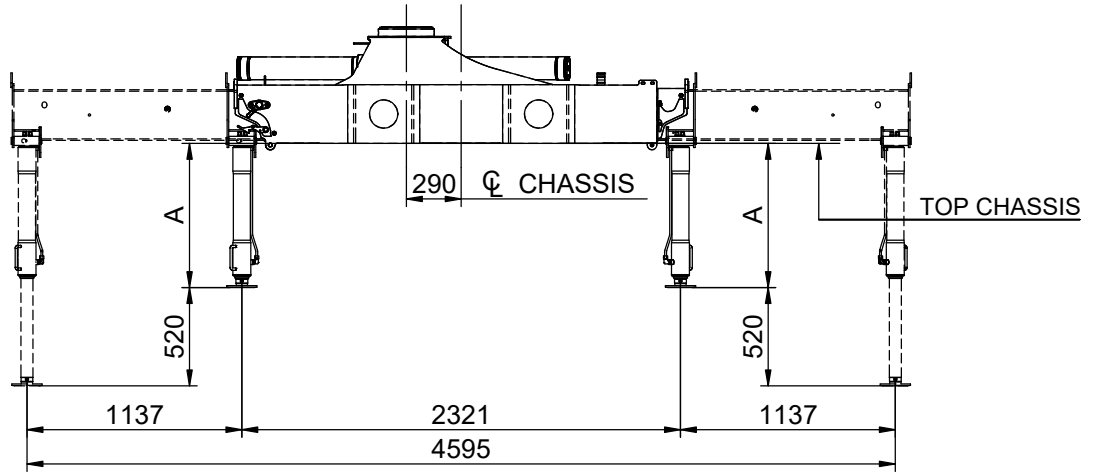


Technical Information 1920K-RCS



Dimension sketch, swing-up stabilizer legs 30° - 60° (manual)

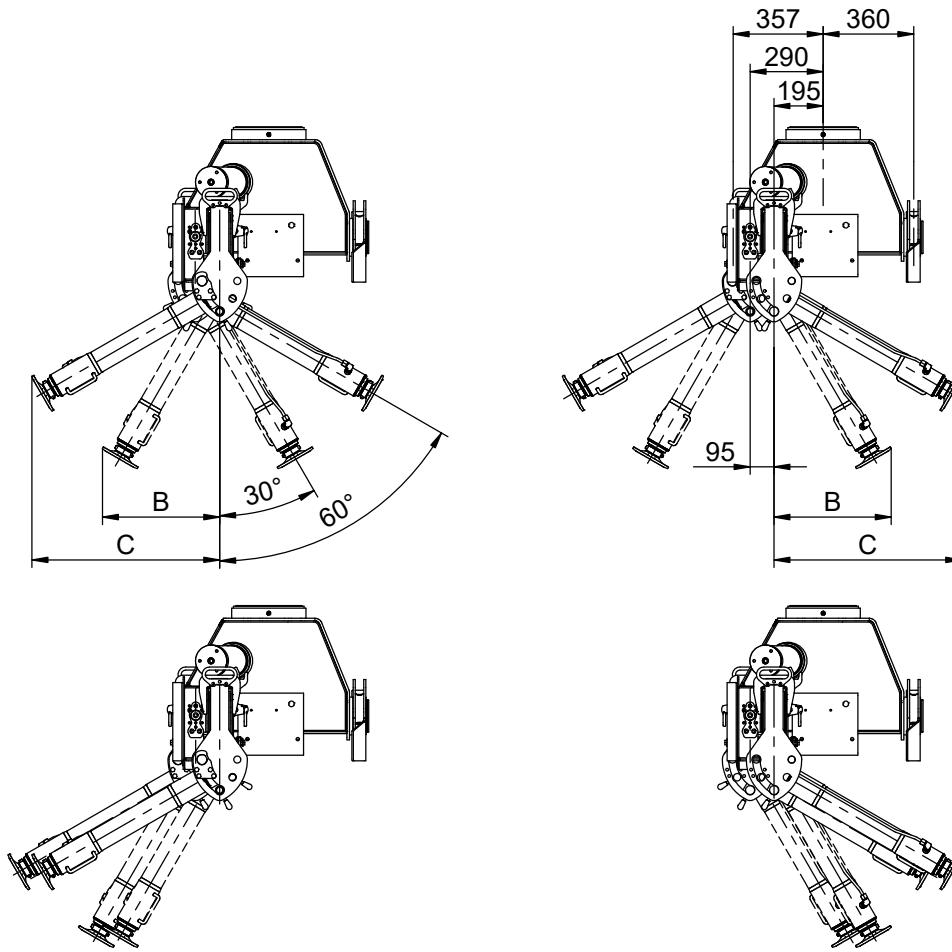
Catalogue no.	Section
31 127	51
Date	Page
31-08-2018	1 (2)



A Type R-60°	771	871	971

Dimension sketch, swing-up stabilizer legs 30° - 60° (manual)

Catalogue no.	Section
31 127	51
Date	Page
31-08-2018	2 (2)



B	465	515	565
C	744	831	918

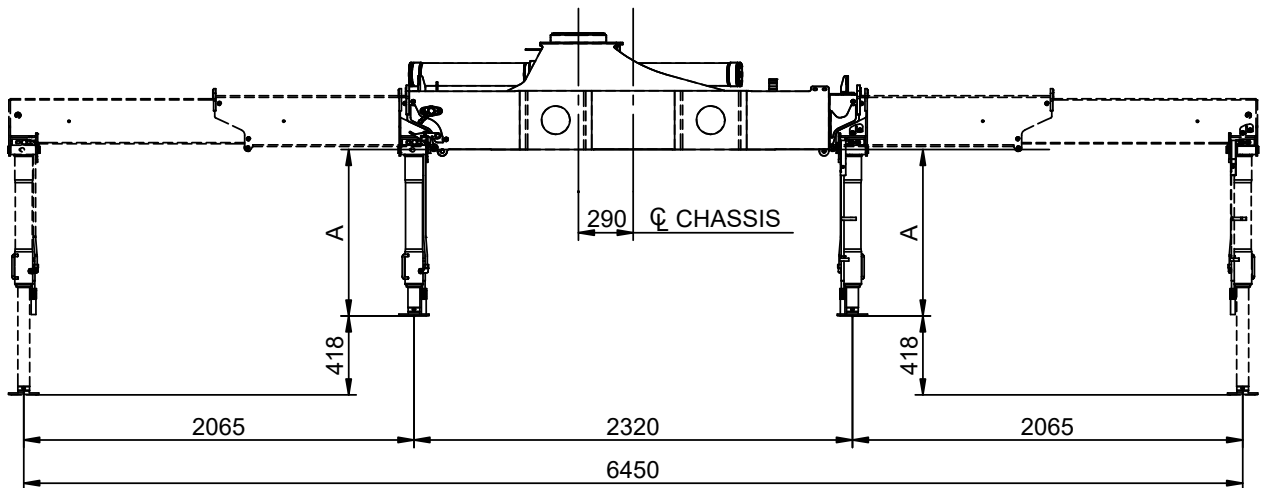
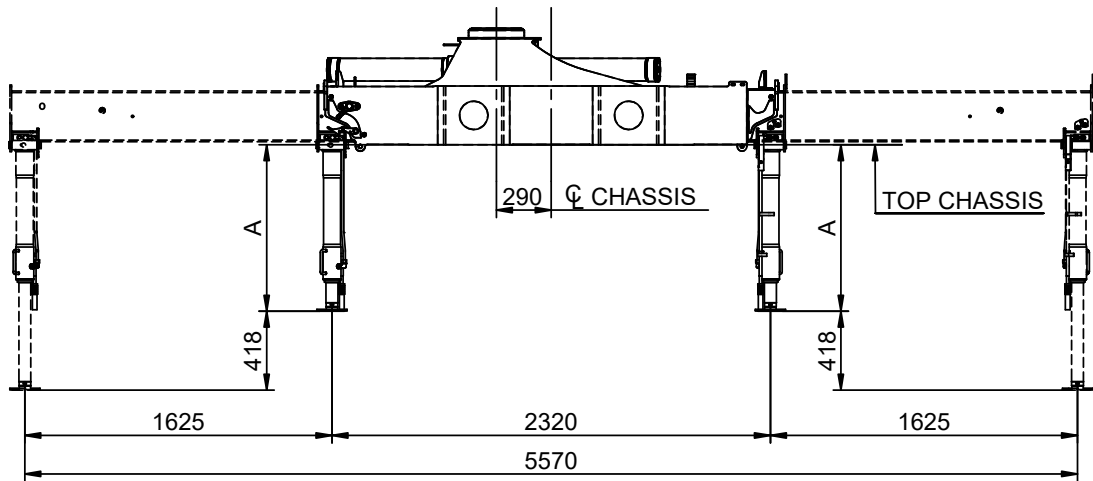
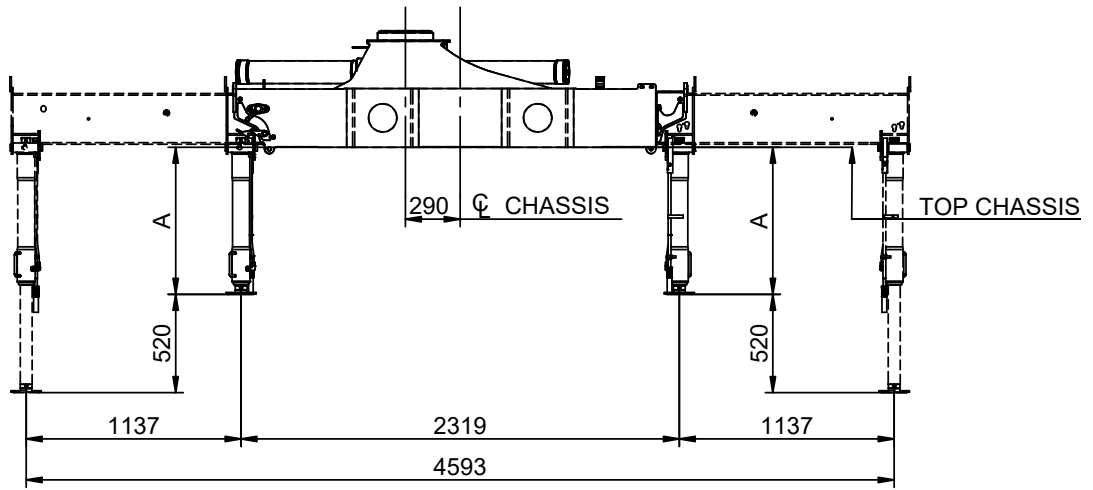


Technical Information 1920K-RCS



Dimension sketch, swing-up stabilizer legs 180° (manual + hydraulic)

Catalogue no.	Section
31 127	52
Date	Page
31-08-2018	1 (2)

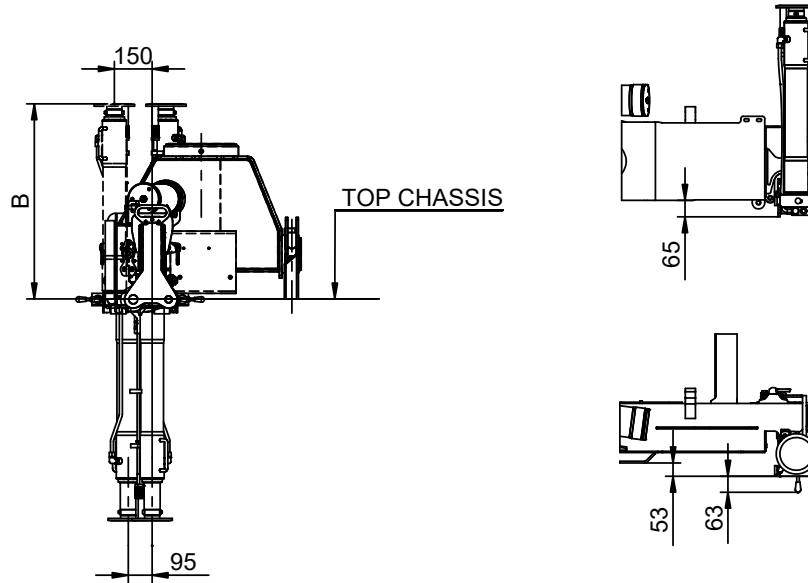


A	881	981	1081

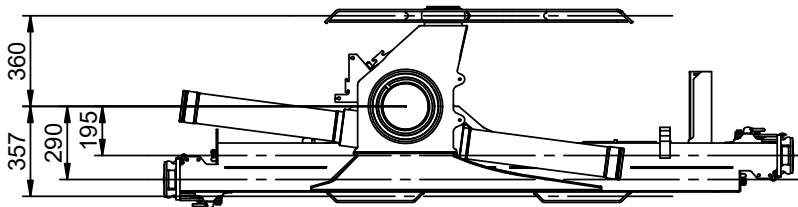


Dimension sketch, swing-up stabilizer legs 180° (manual + hydraulic)

Catalogue no.	Section
31 127	52
Date	Page
31-08-2018	2 (2)

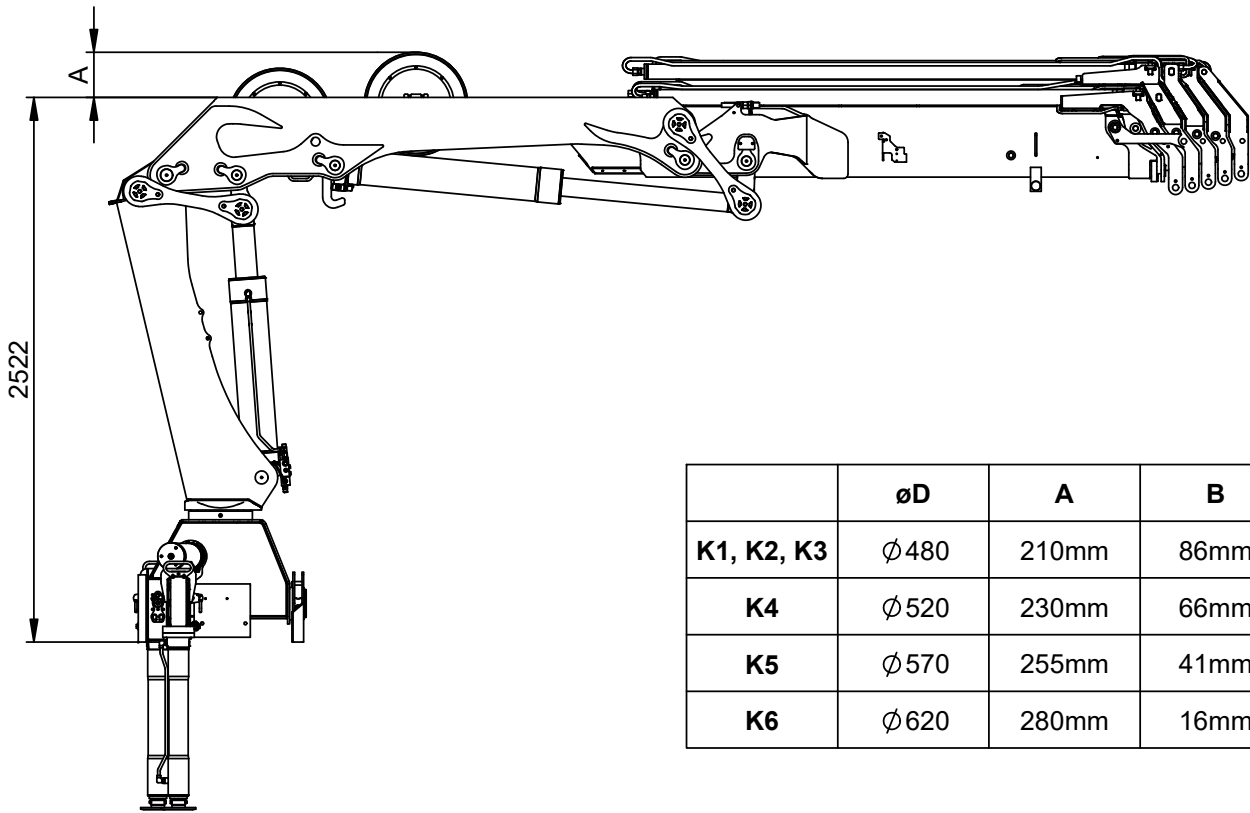


B	775	875	975

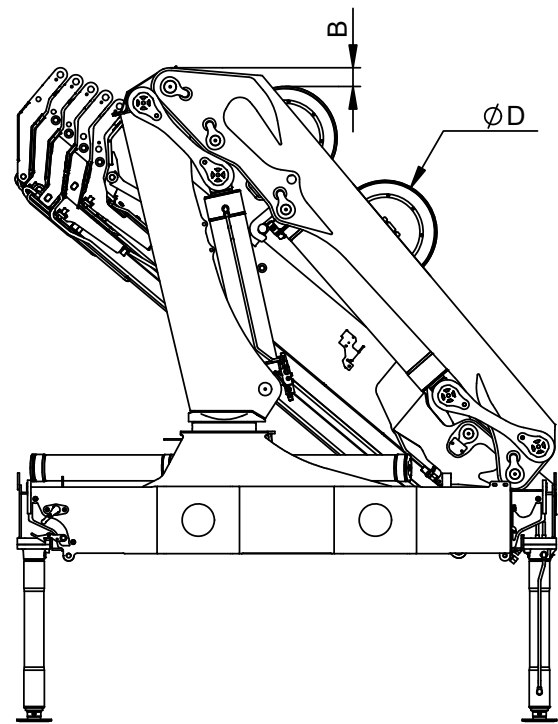
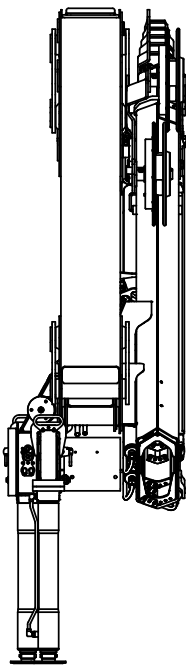


Dimension sketch, internal hose routing

Catalogue no.	Section
31 127	59
Date	Page
31-08-2018	1 (1)

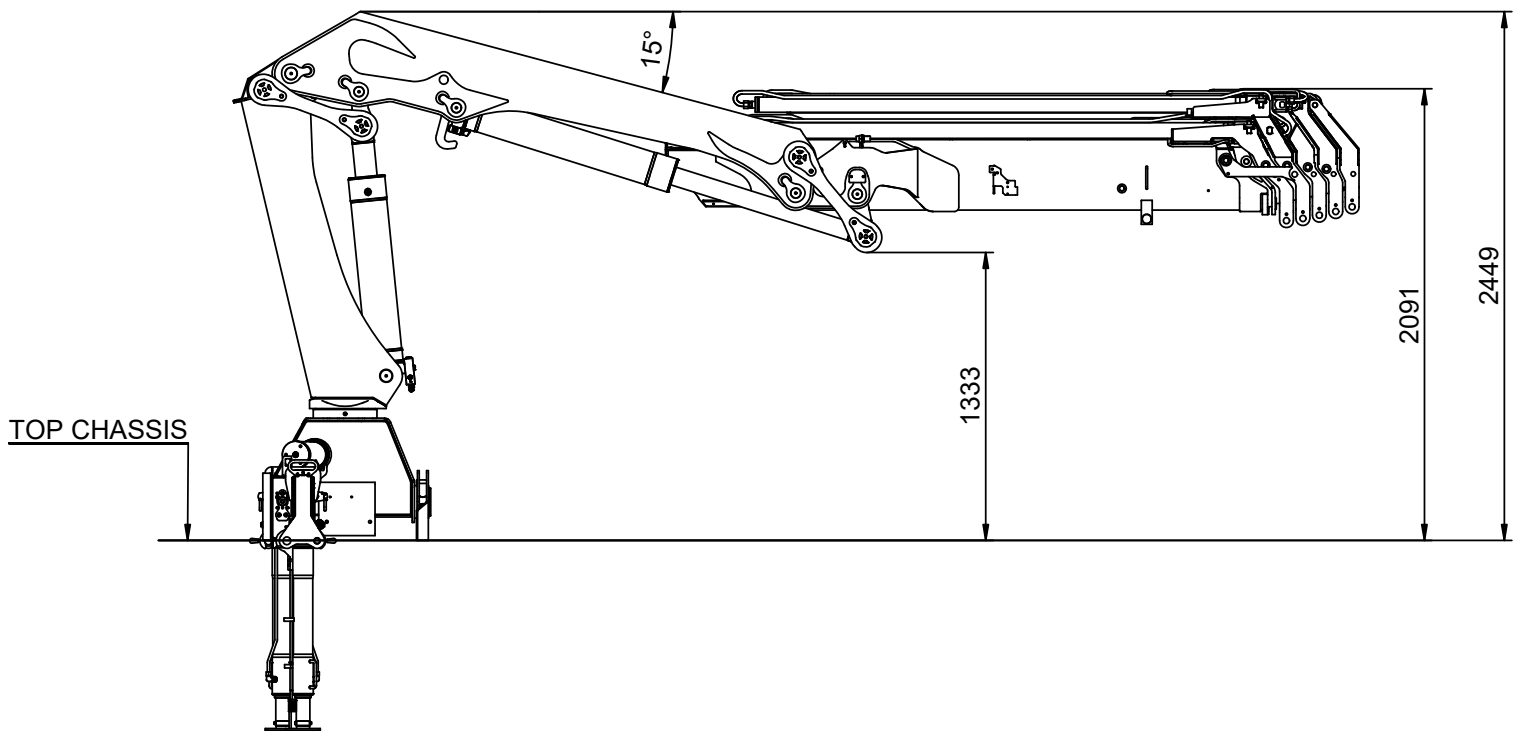
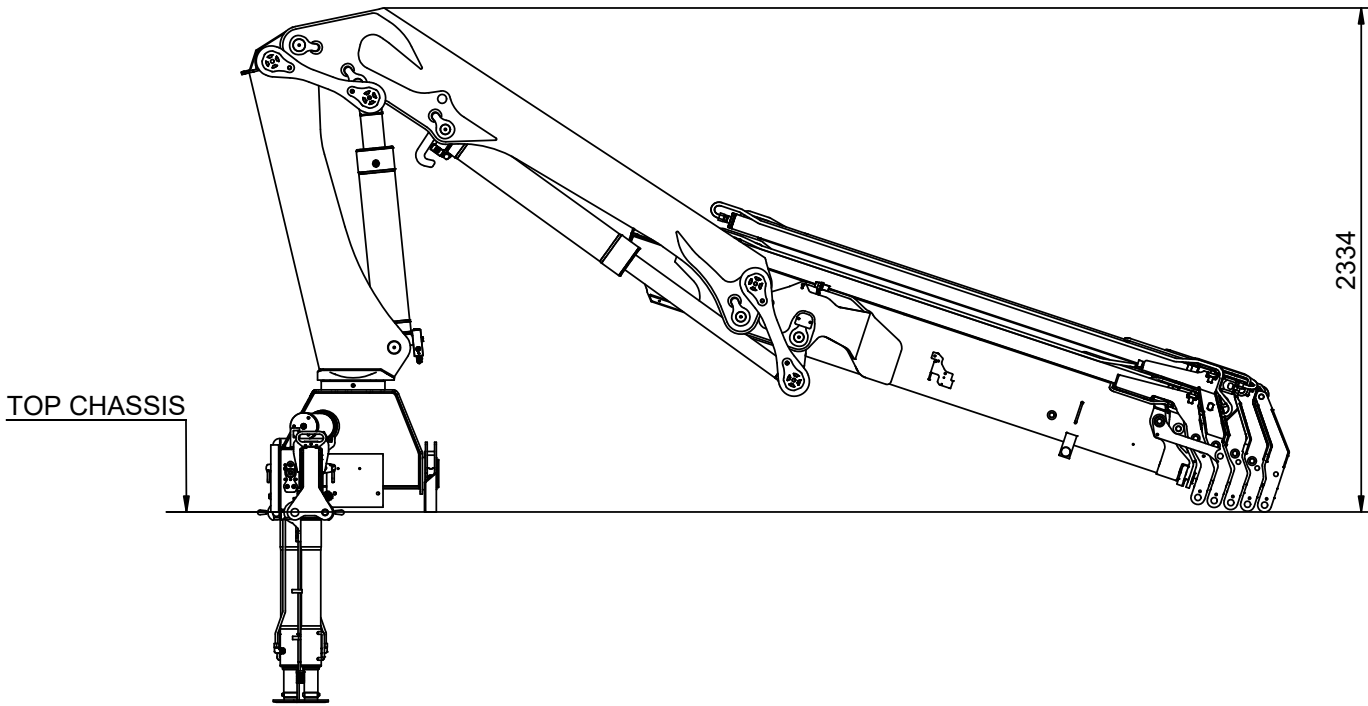


	$\varnothing D$	A	B
K1, K2, K3	$\varnothing 480$	210mm	86mm
K4	$\varnothing 520$	230mm	66mm
K5	$\varnothing 570$	255mm	41mm
K6	$\varnothing 620$	280mm	16mm



Stowed in truck body

Catalogue no.	Section
31 127	65
Date	Page
31-08-2018	1 (1)



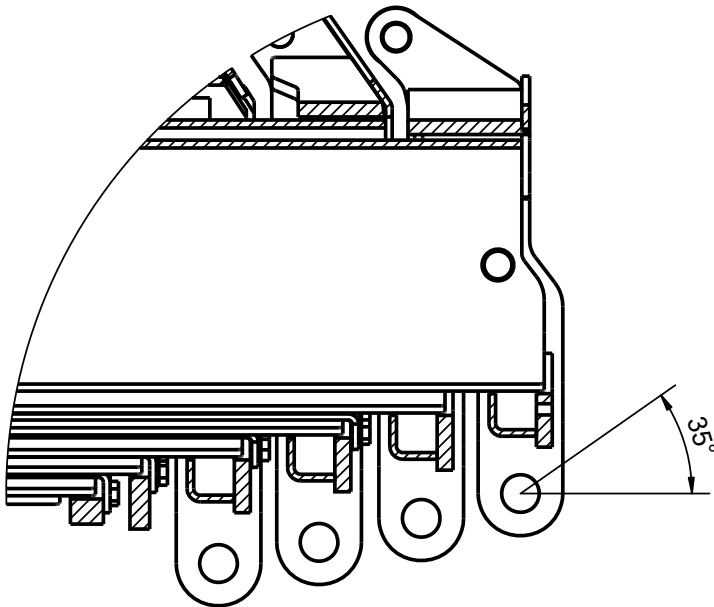
Dimension sketch for connecting link

Catalogue no.	Section
31 127	66
Date	Page
31-08-2018	1 (1)

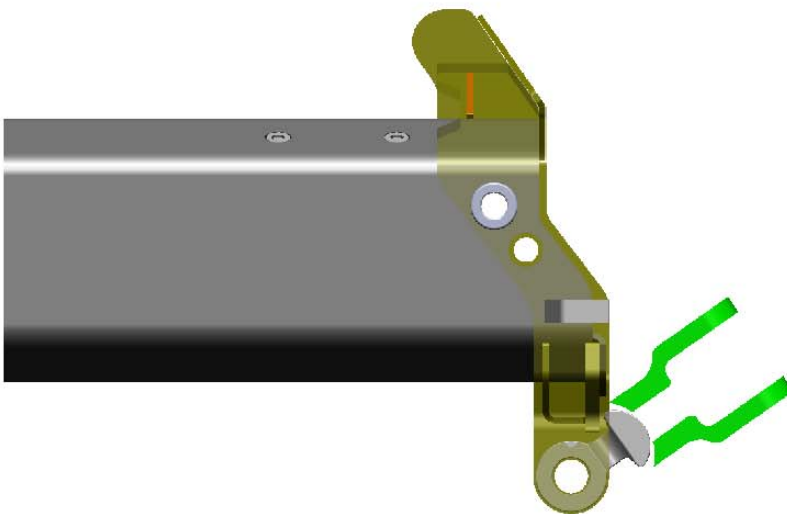
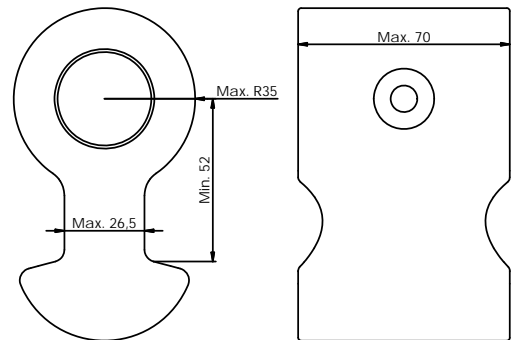
Manufacturing of connecting links for crane equipment:

The following design considerations are recommended to ensure that the connecting link can swing sufficiently when using the equipment connected and when stowing in truck body and/or folding.

In general, we recommend that the connecting link can move freely in an angle of minimum 35° in both directions in relation to the longitudinal direction of the jib extension. This is to minimize the risk of damage to the hook suspension when placing crane equipment in the truck body.

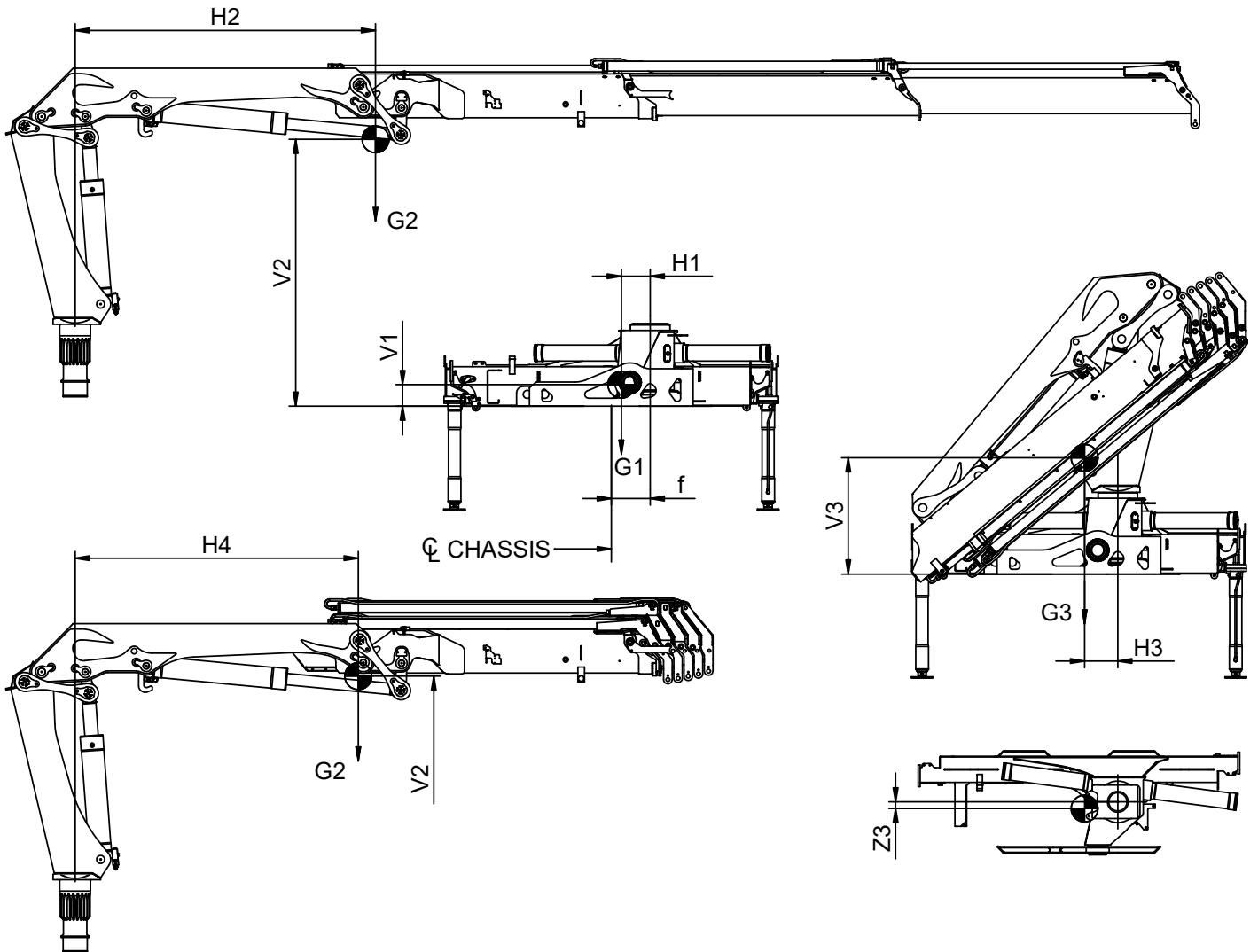


Recommended dimensions for connecting link



Centres of gravity

Catalogue no.	Section
31 127	75
Date	Page
31-08-2018	1 (1)



1920K-RCS:

	[mm]									[kg]		
	V1	V2	V3	H1	H2	H3	H4	Z3	f	G1	G2	G3
K1	165	1935	785	215	1560	330	1315	5	290	650	955	1605
K2	165	1995	800	215	2245	325	1560	10	290	650	1100	1750
K3	165	2040	820	215	2980	315	1750	25	290	650	1240	1890
K4	165	2070	835	215	3755	305	1900	40	290	650	1370	2020
K5	165	2095	850	215	4495	300	2020	55	290	650	1480	2130
K6	165	2115	860	215	5130	280	2105	60	290	650	1585	2235

1920-K + Fly-jib:

	[mm]									[kg]		
	V1	V2	V3	H1	H2	H3	H4	Z3	f	G1	G2	G3
1920-K3 + FJ700-K3	165	2115	1060	215	5875	290	3060	120	290	650	1710	2360
1920-K3 + FJ700-K4	165	2120	1075	215	6340	295	3195	125	290	650	1770	2420



Technical Information, 1920K-RCS



Technical Data

Catalogue no.	Section
31 127	210
Date	Page
03-01-2019	1(2)

Performance		1920K1- RCS	1920K2- RCS	1920K3- RCS	1920K4- RCS	1920K5- RCS	1920K6- RCS
Loading group (EN12999)		H1/B3	H1/B3	H1/B3	H1/B3	H1/B3	H1/B3
Load moment	tm	18,1	17,6	17,2	16,8	16,4	16,1
Hydraulic reach	m	6,3	8,4	10,5	12,8	15	17,3
Hydraulic telescopic movement	mm	1930	3940	6040	8230	10390	12580
Lifting capacity, hydraulic	kg - m	4200 - 4,3	4070 - 4,3	3900 - 4,4	3740 - 4,5	3600 - 4,6	3470 - 4,6
	kg - m	2910 - 6,2	2780 - 6,3	2640 - 6,3	2500 - 6,4	2380 - 6,5	2270 - 6,6
	kg - m		2100 - 8,3	1960 - 8,3	1840 - 8,4	1720 - 8,5	1620 - 8,6
	kg - m			1560 - 10,4	1430 - 10,5	1320 - 10,6	1220 - 10,7
	kg - m				1170 - 12,7	1060 - 12,8	970 - 12,9
	kg - m					900 - 14,9	810 - 15
	kg - m						700 - 17,2
Lifting capacity, manual extensions	kg - m		1610 - 10,4	1220 - 12,7	930 - 15	740 - 17,2	500 - 19,6
Slewing torque, gross	kNm	17,6	17,6	17,6	17,6	17,6	17,6
Slewing angle	°	400	400	400	400	400	400
Max. heel at max. load moment	°	5	5	5	5	5	5
Slewing speed	°/s	24	24	24	24	24	24

Dimensions

Height above chassis	mm	2250	2250	2250	2250	2250	2250
Width	mm	2500	2500	2500	2500	2500	2500
Width with extra valves (int. hose routing)	mm	2535	2535	2535	2535	2535	2535
Length, no extra valves	mm	830	830	830	830	830	830
Length, with extra valves (hose guides)	mm	950	950	950	950	950	950
Length, with extra valves (int. hose routing)	mm	830	830	830	830	830	830
Stabilizer spread, S1 (standard)	mm	4615	4615	4615	4615	4615	4615
Stabilizer spread, S2	mm	5590	5590	5590	5590	5590	5590
Stabilizer spread, D	mm	6470	6470	6470	6470	6470	6470

Weights, basic loader

Standard loader 1), excl. stabilizers	kg	1420	1560	1700	1835	1955	2050
Stabilizers, S1 fixed	kg	200	200	200	200	200	200
Stabilizers, S1 swing-up	kg	205	205	205	205	205	205
Stabilizers, S1 hydr. swing-up	kg	215	215	215	215	215	215
Stabilizers, S2 fixed	kg	235	235	235	235	235	235
Stabilizers, S2 swing-up	kg	240	240	240	240	240	240
Stabilizers, S2 hydr. swing-up	kg	250	250	250	250	250	250
Stabilizers, D1 fixed	kg	300	300	300	300	300	300
Stabilizers, D1 swing-up	kg	300	300	300	300	300	300
Stabilizers, D1 hydr. swing-up	kg	315	315	315	315	315	315
Mounting kit, 4 bolts	kg	55	55	55	55	55	55
Mounting kit, 8 bolts	kg	60	60	60	60	60	60
Tank, excl. oil (fitted on loader)	kg	45	45	45	45	45	45
Manual extensions	kg		85	75	65	45	40
Oil in loader (stowing position)	kg	30	35	40	45	50	50

1) Weights ± 5% because of tolerances for plate thickness





Technical Data

Catalogue no.	Section
31 127	210
Date	Page
03-01-2019	2(2)

Weights, equipment		1920K1-RCS	1920K2-RCS	1920K3-RCS	1920K4-RCS	1920K5-RCS	1920K6-RCS
Stand-up controls (HS), std.	kg	60	60	60	60	60	60
Stand-up controls (HS), direct valve control	kg	70	70	70	70	70	70
Top seat (TS)	kg	90	90	90	90	90	90
Top seat, ladder	kg	20	20	20	20	20	20
1 extra valve, hose guides	kg	40	55	65	75	85	95
1 extra valve, int. hose routing	kg	75	75	75	80	80	85
2 extra valves, hose guides	kg	60	75	90	105	120	135
2 extra valves, int. hose routing	kg	130	130	130	140	145	150
Winch (1.5 t), single snatch block	kg	175	175	175	175	175	180
Winch (1.5 t), double snatch block	kg	170	170	170	170	170	175
Winch (2.5 t), single snatch block	kg	200	200	200	200	200	205
Winch (2.5 t), double snatch block	kg	195	195	195	195	195	200
High-pressure filter	kg	7	7	7	7	7	7
Oil cooler	kg	25	25	25	25	25	25

Max. load on stabilizers (per stabilizer cylinder)

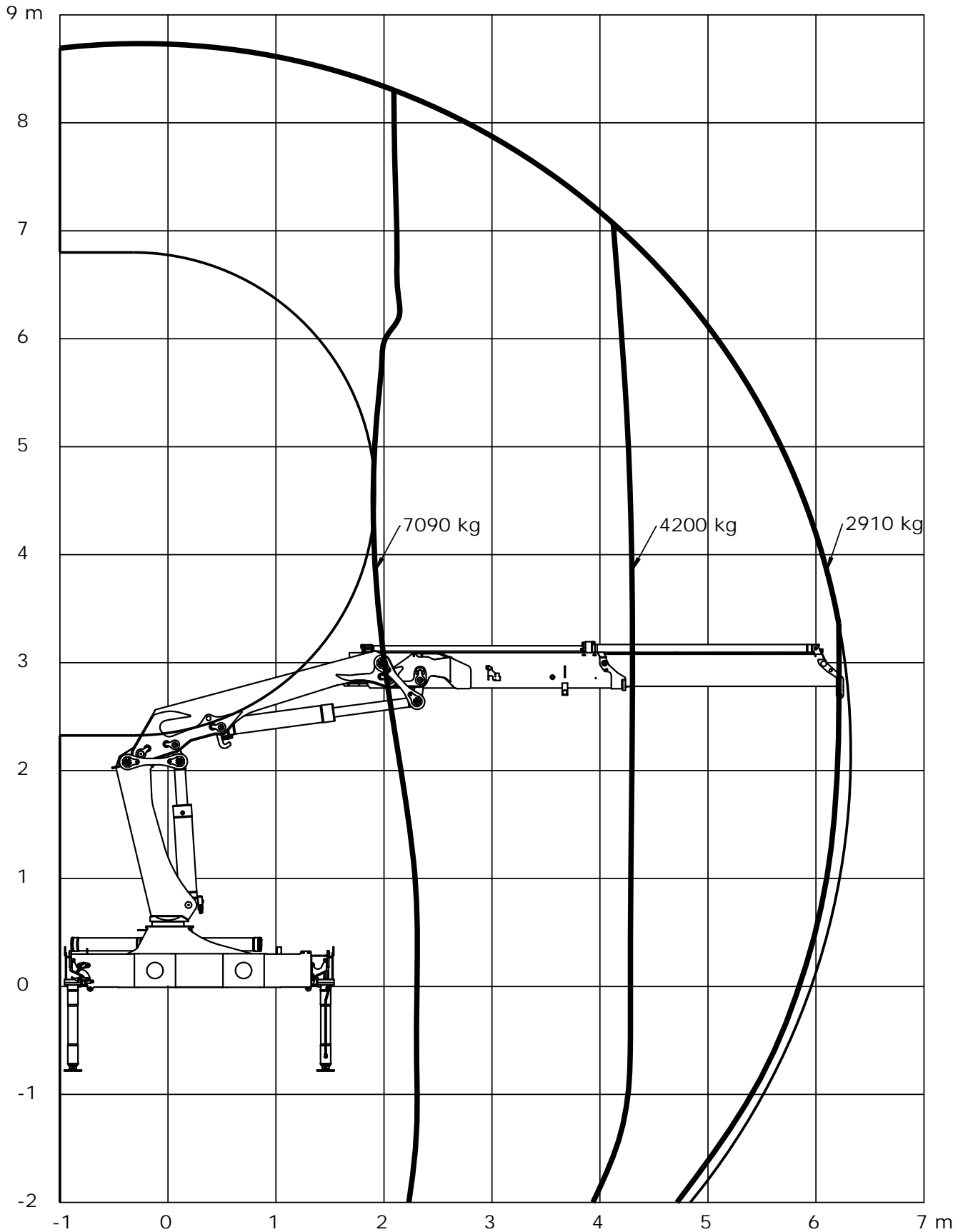
S1, fixed	kN	85	85	85	85	85	85
S1, swing-up	kN	85	85	85	85	85	85
S1, hydr. swing-up	kN	85	85	85	85	85	85
S2, fixed	kN	85	85	85	85	85	85
S2, swing-up	kN	85	85	85	85	85	85
S2, hydr. swing-up	kN	85	85	85	85	85	85
D, fixed	kN	68	68	68	68	68	68
D, swing-up	kN	68	68	68	68	68	68
D, hydr. swing-up	kN	68	68	68	68	68	68

Power consumption / oil capacity

Working pressure	Bar	365	365	365	365	365	365
Tank capacity, standard (fitted on loader)	L	90	90	90	90	90	90
Max. pump performance, Danfoss fixed flow	L/min	70	70	70	70	70	70
Max. pump performance, Danfoss variable	L/min	100	100	100	100	100	100

Lifting capacity diagram, K1

Catalogue no.	Section
31 127	221
Date	Page
31-08-2018	1 (1)

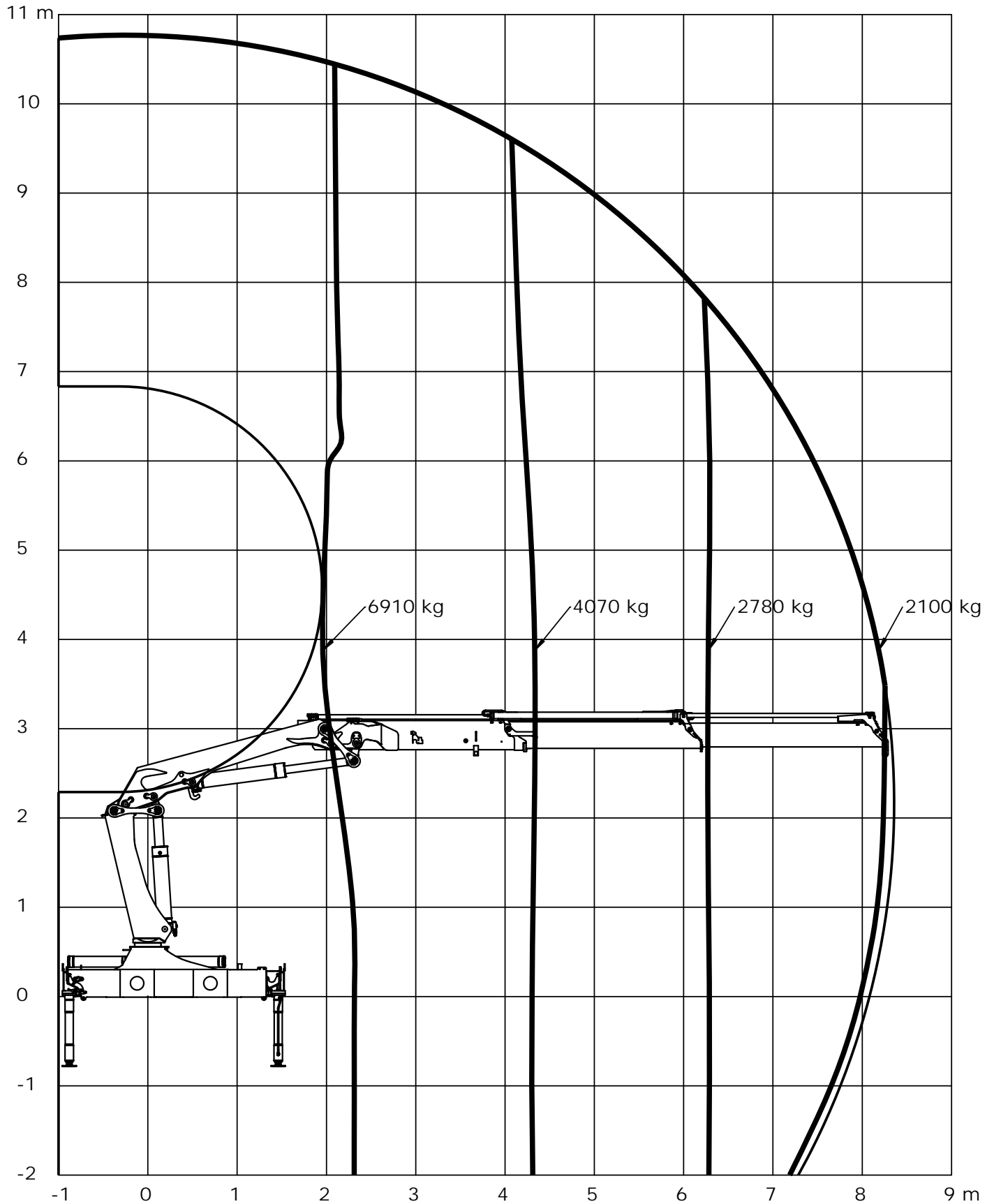


Loading group: EN12999 H1/B3



Lifting capacity diagram, K2

Catalogue no.	Section
31 127	222
Date	Page
31-08-2018	1 (1)

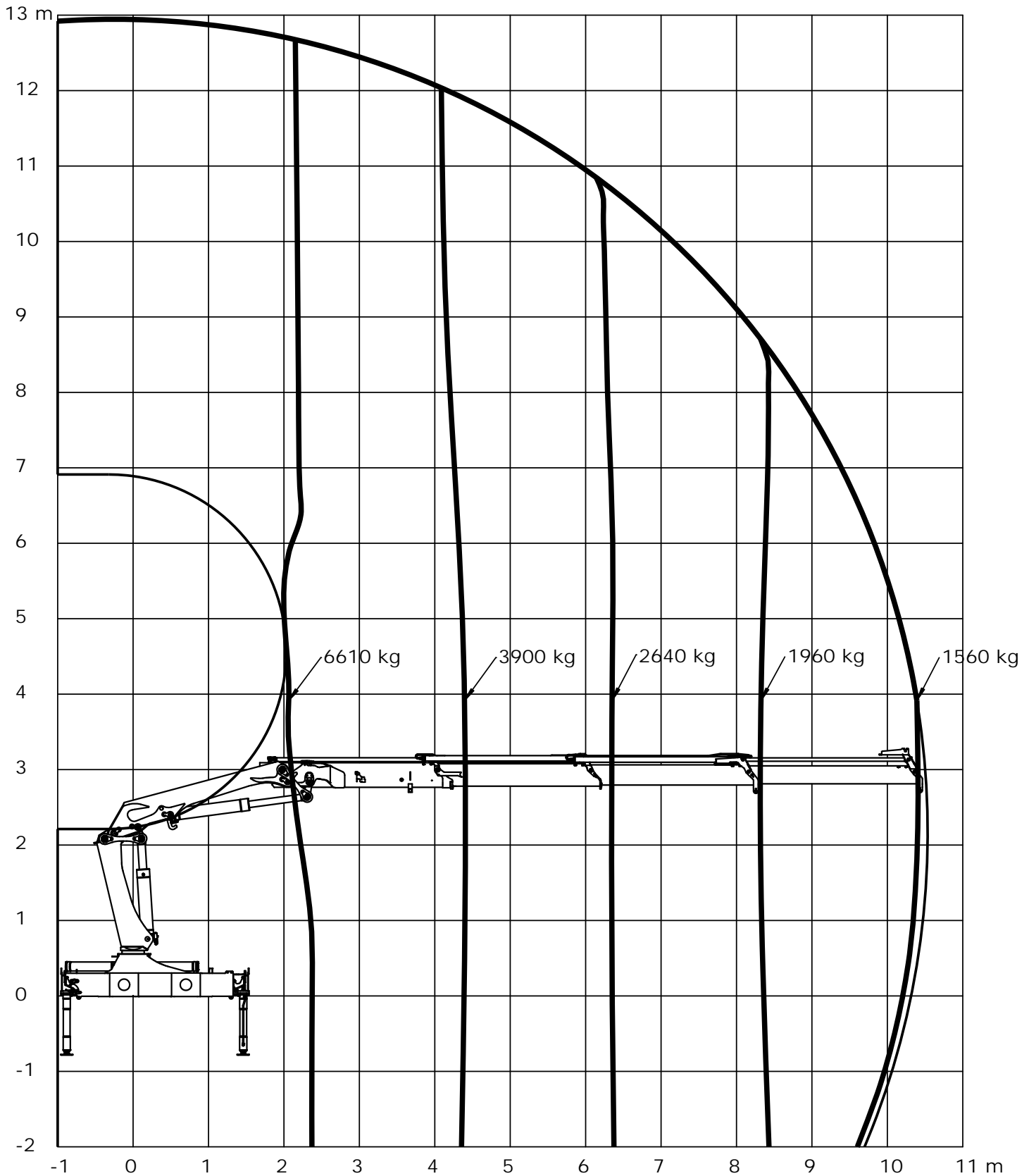


Loading group: EN12999 H1/B3



Lifting capacity diagram, K3

Catalogue no.	Section
31 127	223
Date	Page
31-08-2018	1 (1)

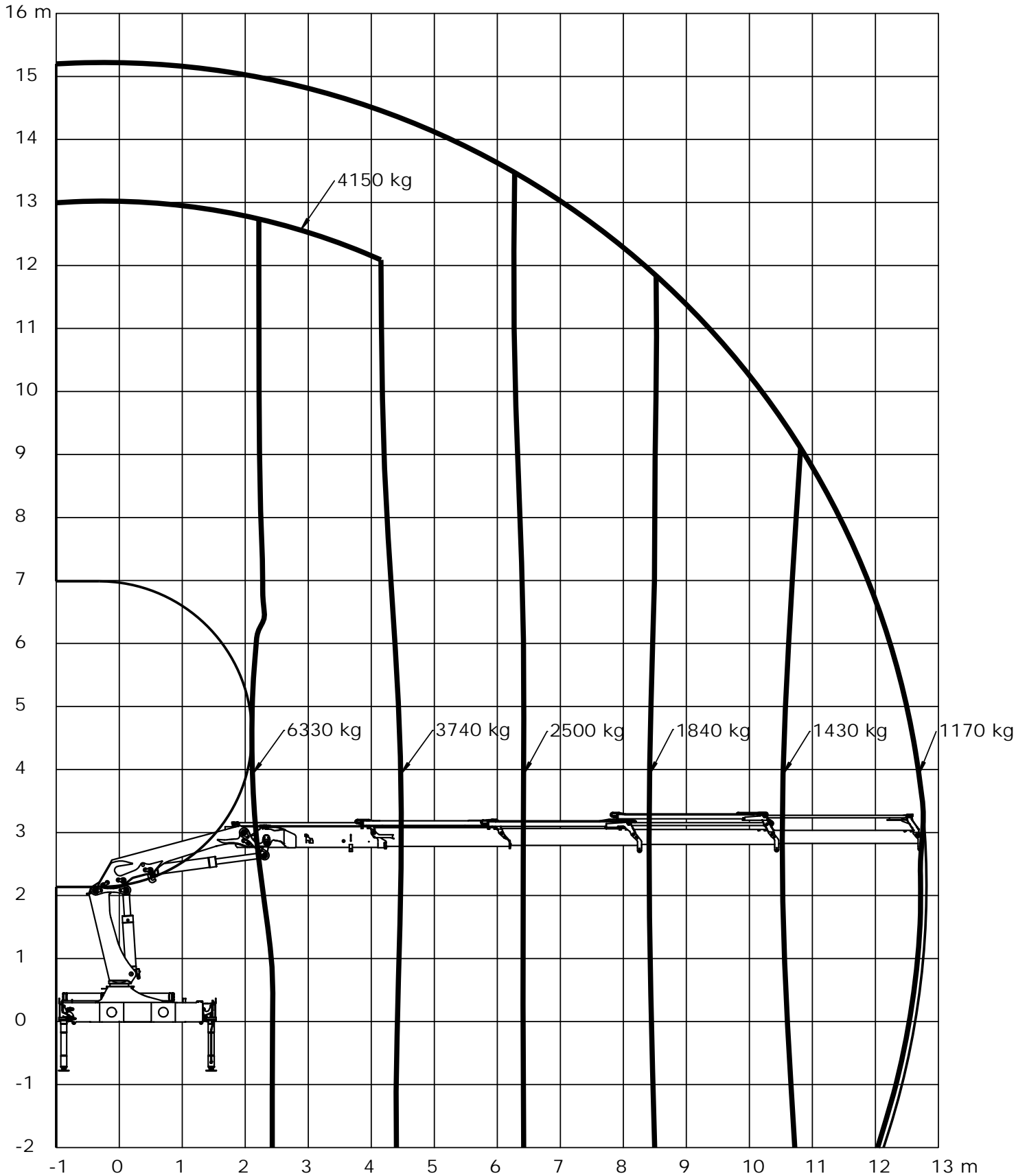


Loading group: EN12999 H1/B3



Lifting capacity diagram, K4

Catalogue no.	Section
31 127	224
Date	Page
31-08-2018	1 (1)

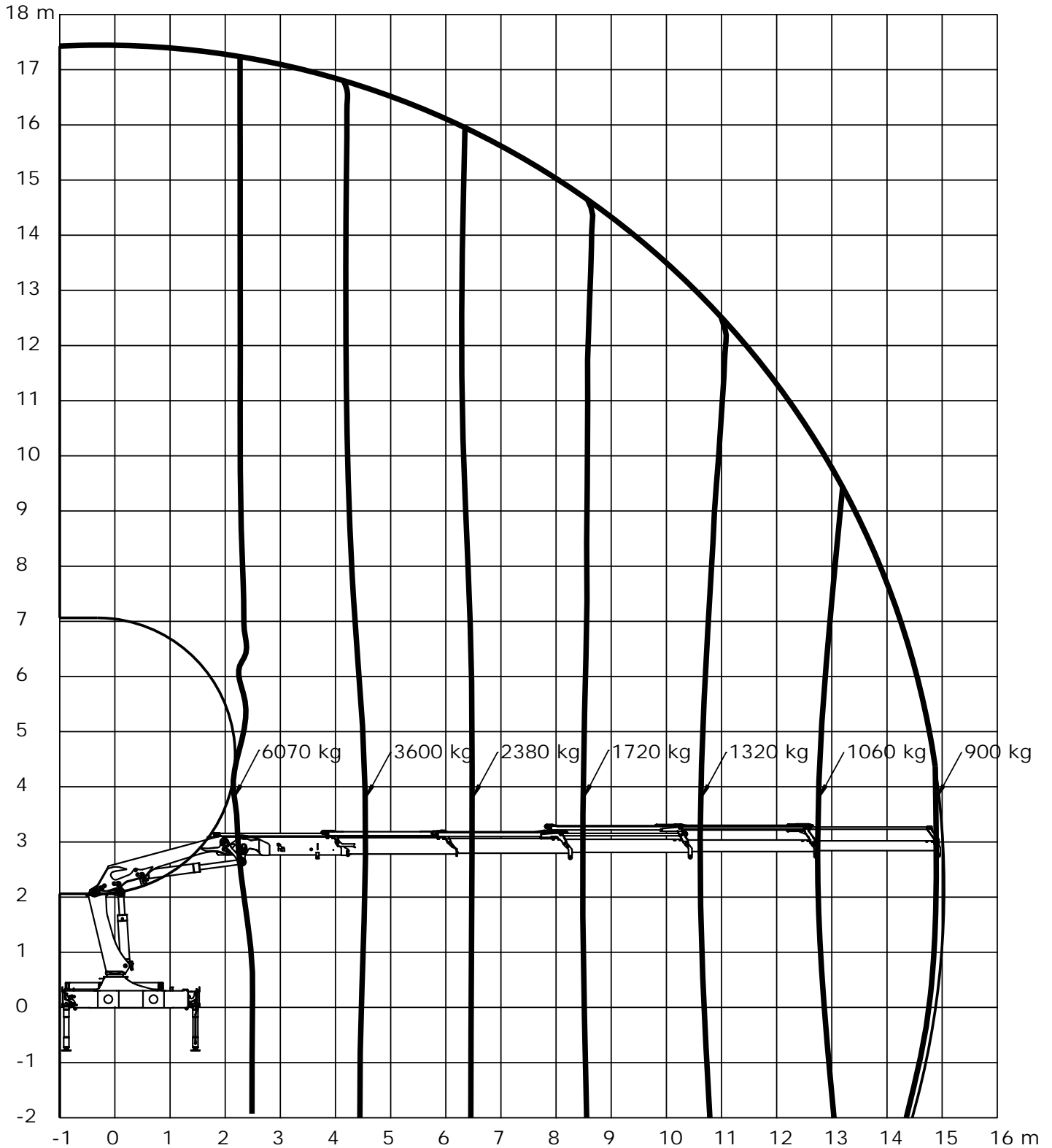


Loading group: EN12999 H1/B3



Lifting capacity diagram, K5

Catalogue no.	Section
31 127	225
Date	Page
31-08-2018	1 (1)

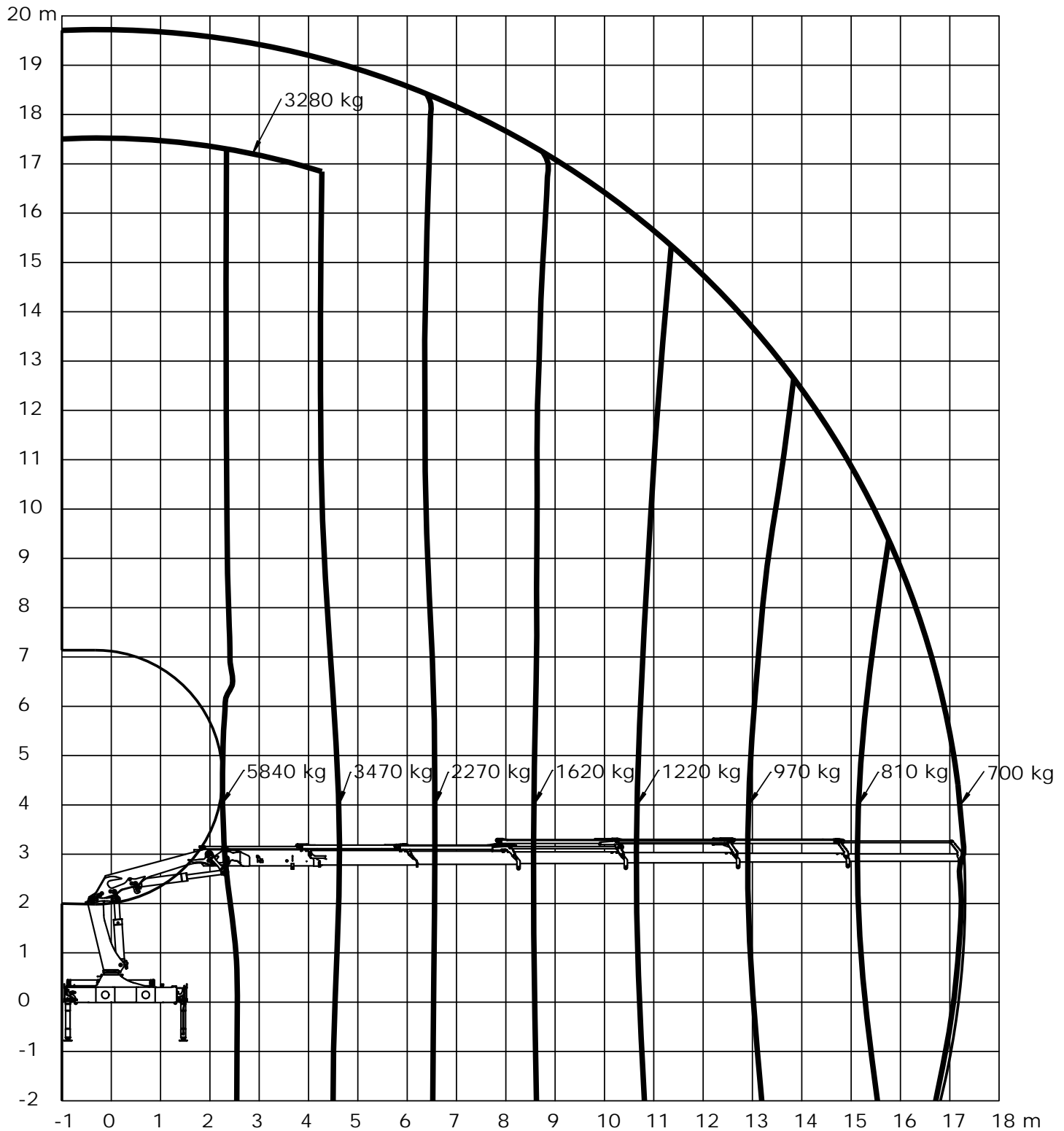


Loading group: EN12999 H1/B3



Lifting capacity diagram, K6

Catalogue no.	Section
31 127	226
Date	Page
31-08-2018	1 (1)



Loading group: EN12999 H1/B3



Technical Information 1920K-RCS



Lifting capacity, K1-K6

Catalogue no.

31 127

Section

235

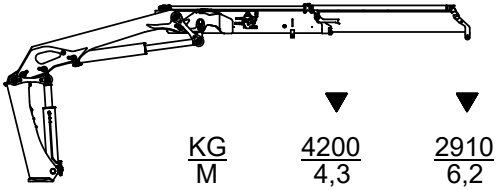
Date

21-08-2018

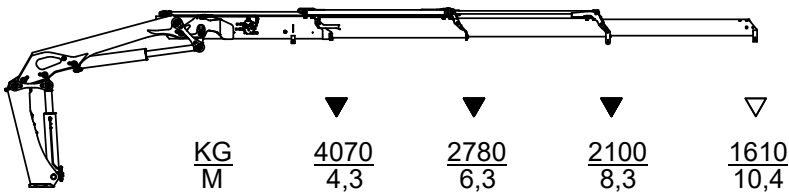
Page

1 (1)

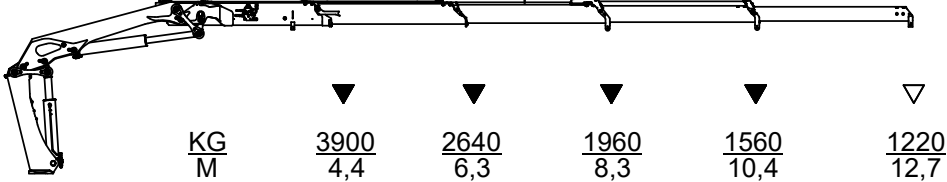
K1



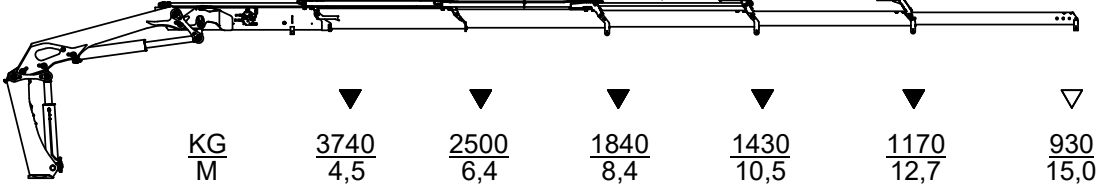
K2



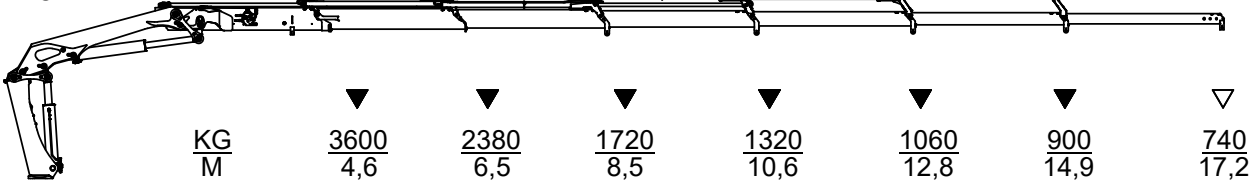
K3



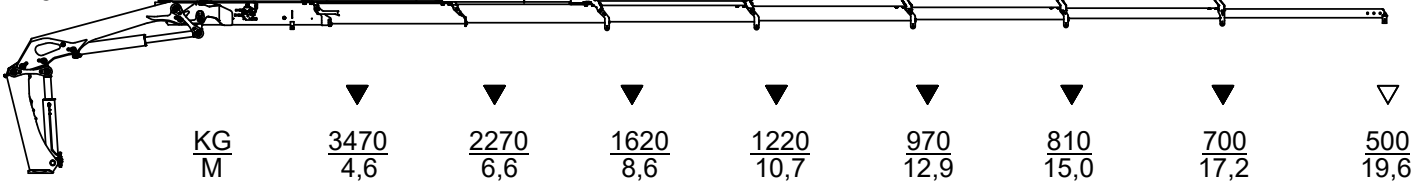
K4



K5



K6



▽ Løfteevne med forlængerarme/Lifting capacity with man. extensions

▼ Løfteevne uden forlængerarme/Lifting capacity without man. extensions

- power to lift. -



Technical Data, 1920K-RCS with Fly-jib

Catalogue no.	Section
31 127	250
Date	Page
31-08-2018	1(1)

Performance		1920-K3	1920-K3
		FJ700-K3	FJ700-K4
Hydraulic reach	m	19,2	21,2
Hydraulic telescopic movement	mm	5450	7400
Out-reach with manual extensions	m	23	23,1
Lifting capacity, hydraulic	kg-m	780 - 13,6	730 - 13,7
		670 - 15,3	620 - 15,4
		585- 17,2	535 - 17,2
		525 - 19,1	475 - 19,1
Lifting capacity, manual extensions	kg-m	440 - 20,9	350 - 23,0
		345 - 22,9	

Dimensions

Height above chassis	mm	2635	2635
Width	mm	2500	2500
Length, without extra valve kit on fly-jib	mm	950	950
Length, with extra valve kit on fly-jib	mm	1045	1045

Weights

Fly-Jib 1)	kg	470	530
Manual extensions	kg	30	20
	kg	20	
1 extra valve (hose reels)	kg	45	45
2 extra valves (hose reels)	kg	90	90

1) Weights ± 5% because of tolerances for plate thickness

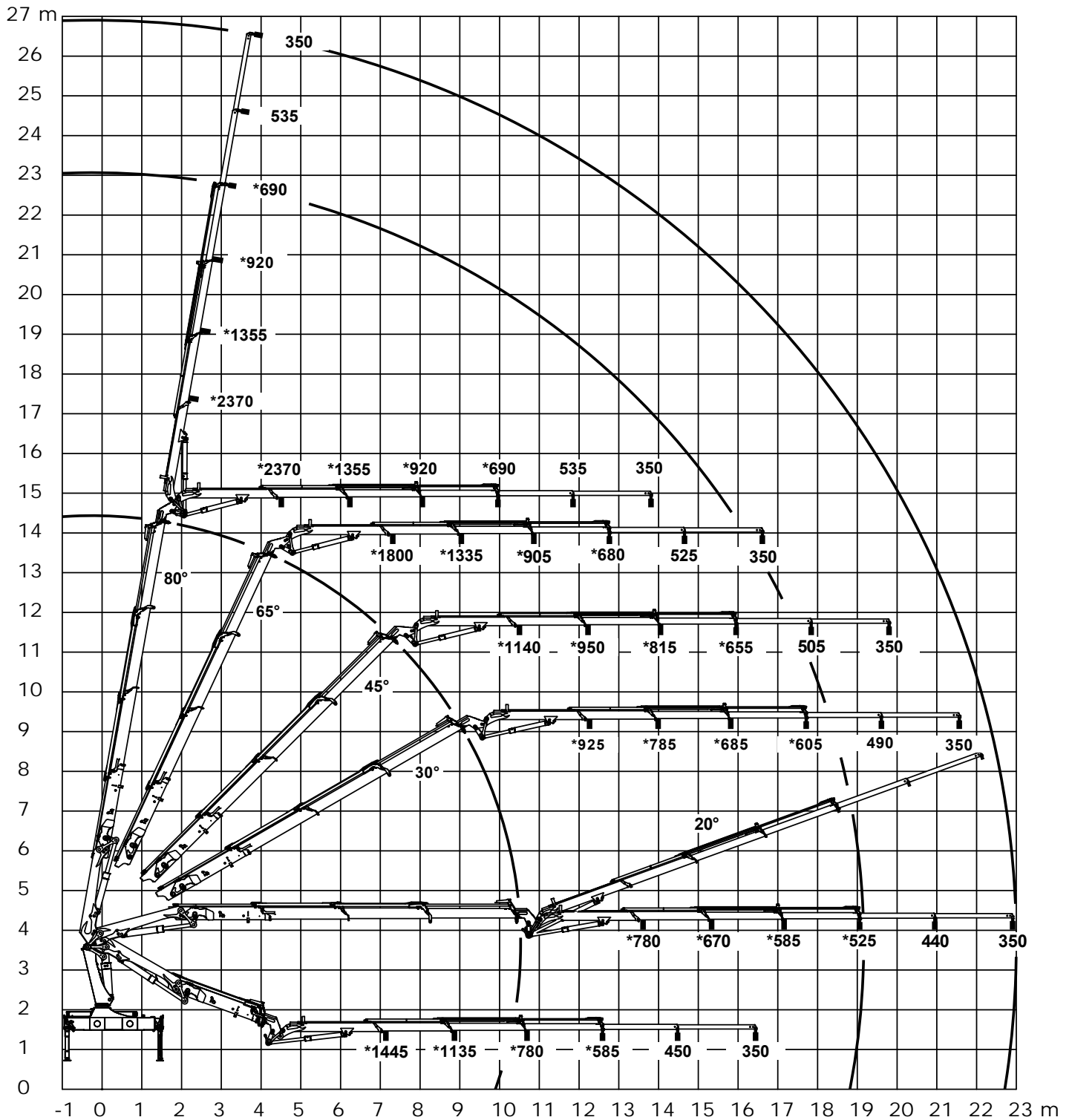


Technical Information 1920K-RCS



Lifting capacity diagram, 1920-K3 with FJ700 K3

Catalogue no.	Section
31 127	253
Date	Page
31-08-2018	1 (1)



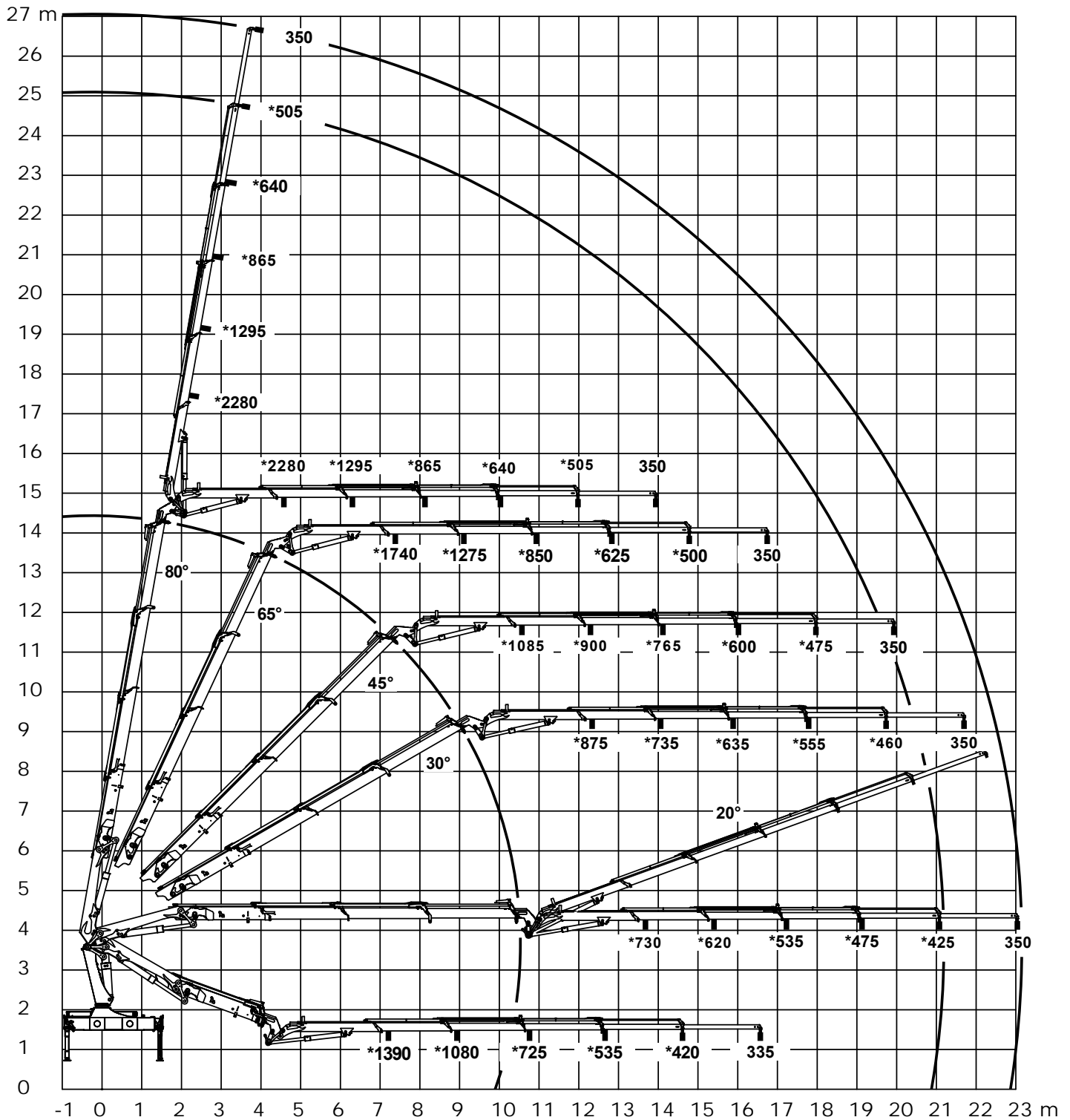
*Uden forlængerarme
 *Without manual extensions
 *Ohne Verlängerungen

- power to lift. -



Lifting capacity diagram, 1920-K3 with FJ700 K4

Catalogue no.	Section
31 127	254
Date	Page
31-08-2018	1 (1)



*Uden forlængerarme
 *Without manual extensions
 *Ohne Verlängerungen



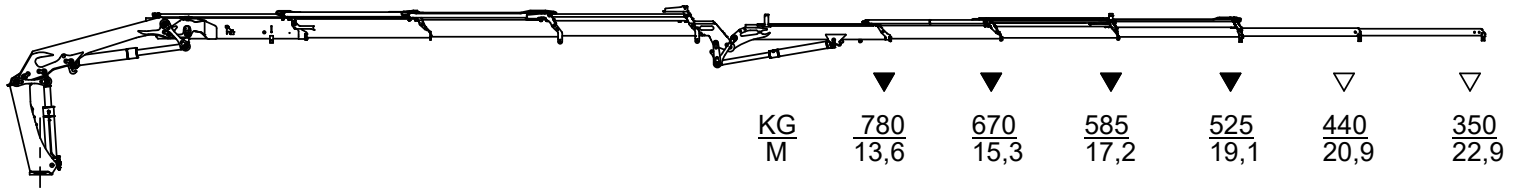
Technical Information 1920K-RCS



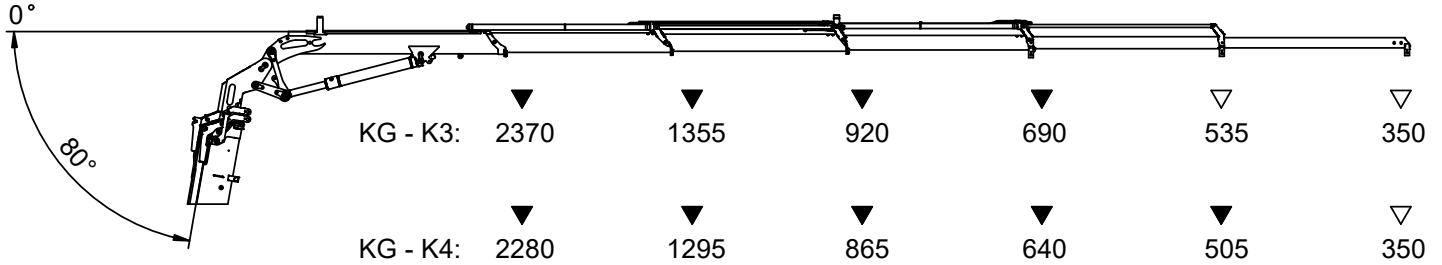
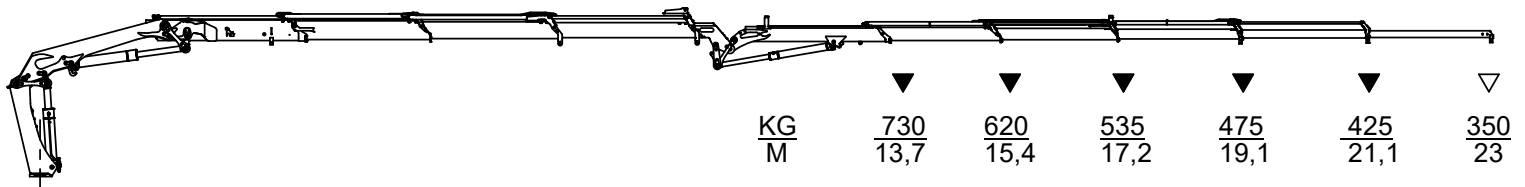
Lifting capacity, 1920-K3 with FJ600

Catalogue no.	Section
31 127	260
Date	Page
31-08-2018	1 (1)

K3 + FJ 700 K3



K3 + FJ 700 K4



- ▽ Løfteevne med forlængerarme/Lifting capacity with man. extensions
- ▼ Løfteevne uden forlængerarme/Lifting capacity without man. extensions

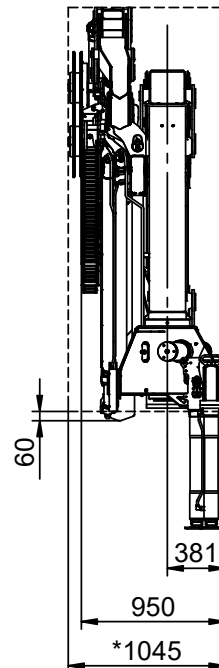
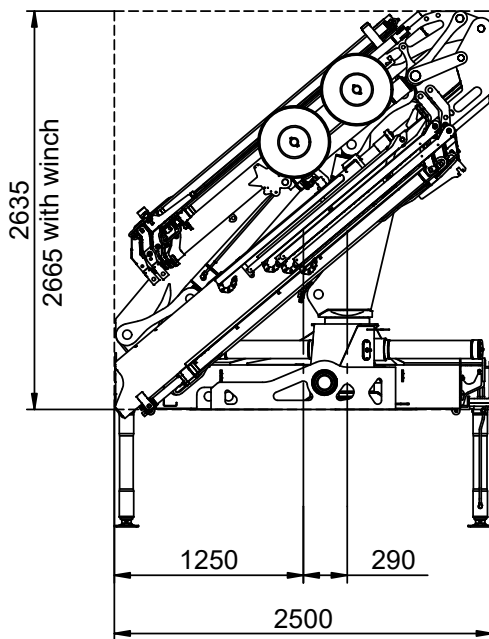
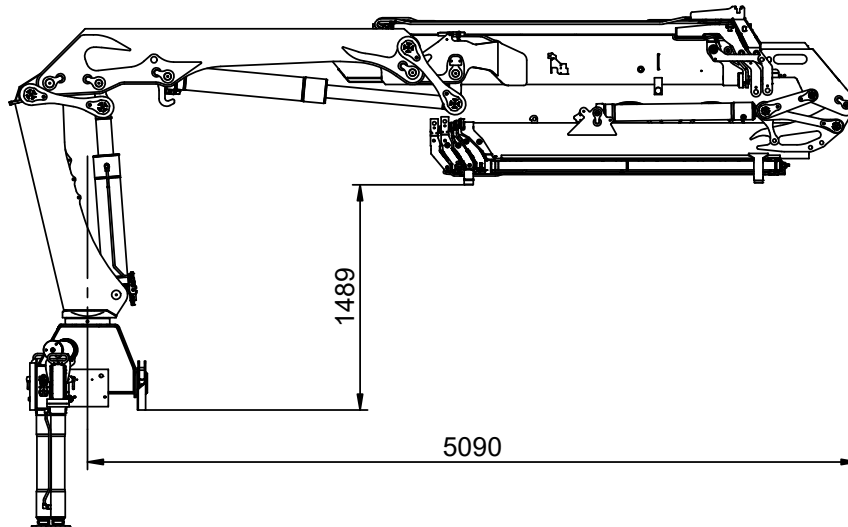
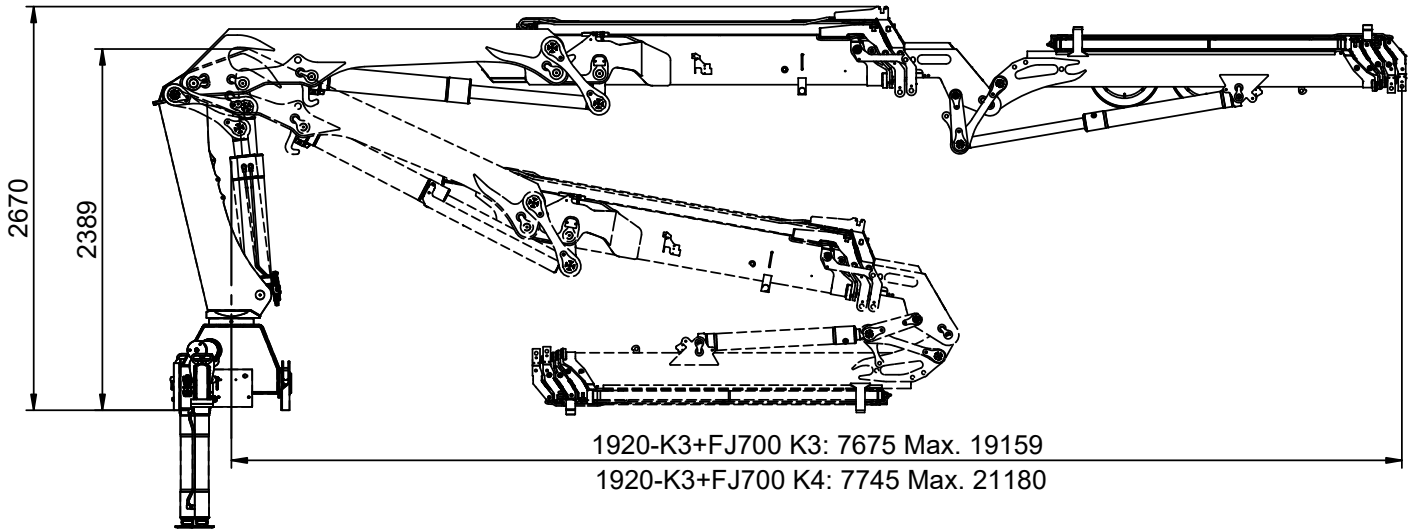


Technical Information 1920K-RCS



Dimension sketch, 1920-K3 with FJ700

Catalogue no.	Section
31 127	265
Date	Page
31-08-2018	1 (1)



*Extra valve kit on Fly-jib

